



# ASSEMBLY INSTRUCTION

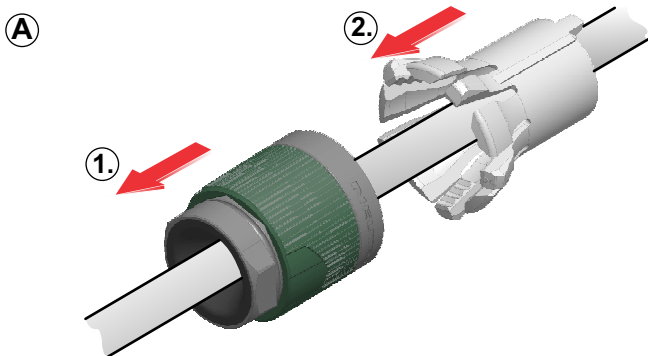
## speakON® | Loudspeaker Cable Connector NL2FXX-W-\* & NL4FXX-W-\*

### A IMPORTANT SAFETY INFORMATION

- ! **ATTENTION:** speakON® IS NOT TO BE USED AS AN AC MAINS OR POWER SUPPLY CONNECTOR!
- CAUTION:** CONNECTOR NOT TO BE ENGAGED AND DISENGAGED IN NORMAL USED WHEN LIVE OR UNDER LOAD.
- ATTENTION:** NE PAS UTILISER POUR COUPER LE COURANT
- PRODUCT IS INTENDED FOR FACTORY ASSEMBLY ONLY**

<b>Approval based:</b>	<b>EN/IEC</b> EN 61984 IEC 61984		<b>UL / CSA</b> UL 1977 CAN/CSA C22.2 No.182.3	
<b>Rating:</b>	250 V ac / 30 A		250 V ac / 30 A	
<b>Wire size:</b>	1.0 - 4.0 mm <sup>2</sup>		16 - 11 AWG	
<b>Cable O.D.:</b>	*-S: 6.0 - 12.0 mm (0.24 - 0.47")		6.0 - 12.0 mm (0.24 - 0.47")	
	*-L: 10.0 - 16.0 mm (0.39 - 0.63")		10.0 - 16.0 mm (0.39 - 0.63")	

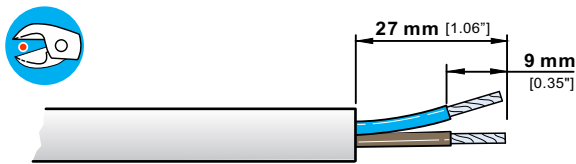
### B ASSEMBLY INFORMATION



**A** Place the bushing (1) and chuck (2) over the cable.

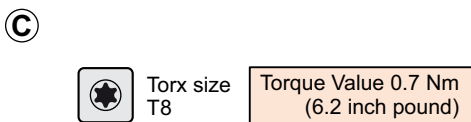
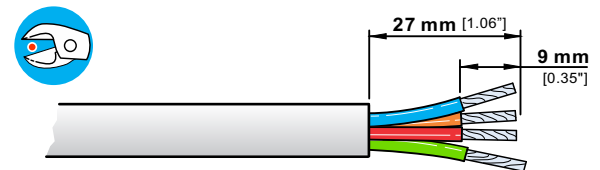
Important: Chuck and Bushing cannot be placed over the cable after the assembly or the insert.

#### **B** CABLE PREPARATION: 2 POLE



**B** Prepare the cable as shown.

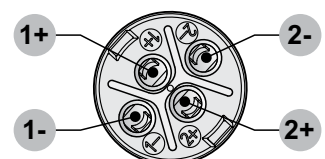
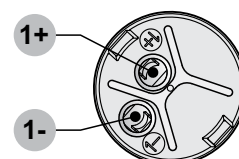
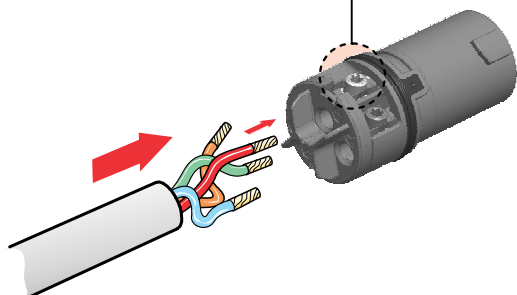
#### **B** CABLE PREPARATION: 4 POLE

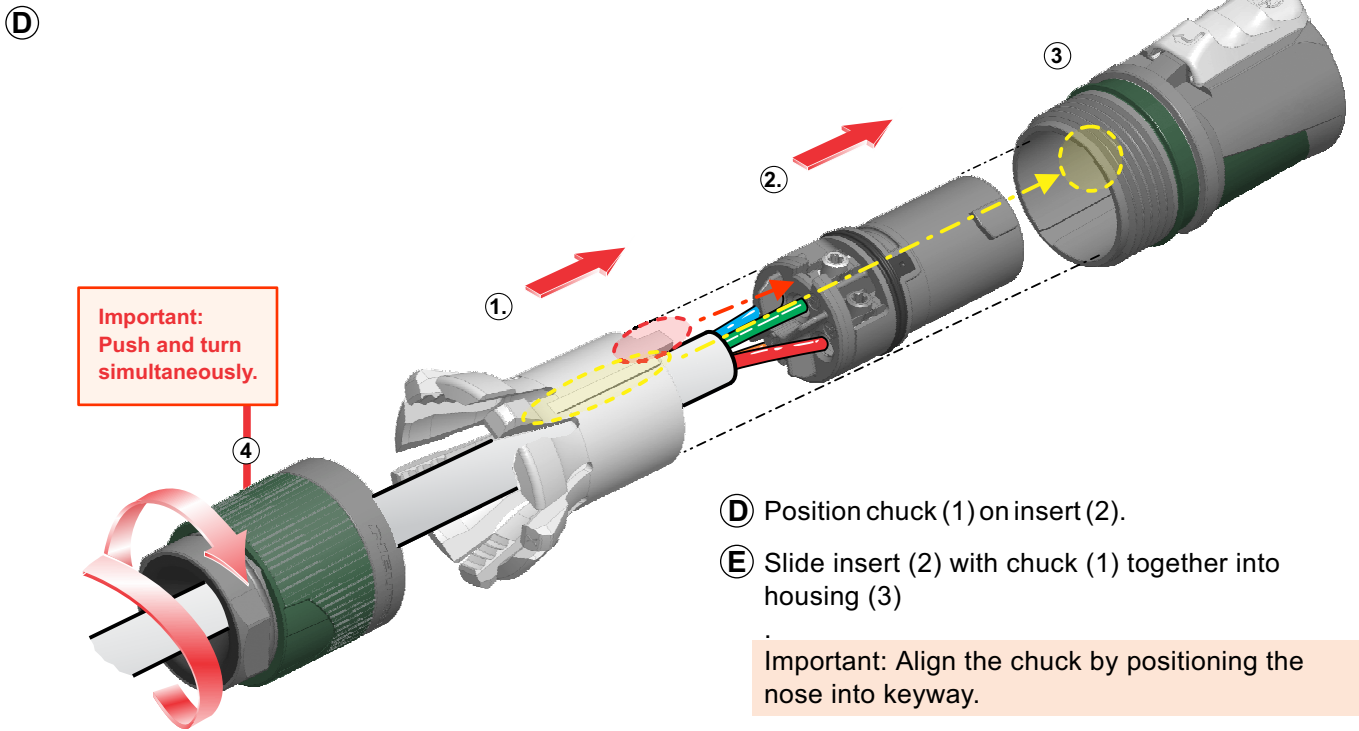


**C** Slide the cable into the contacts and clamp

#### **WIRING: 2 POLE**

#### **WIRING: 4 POLE**



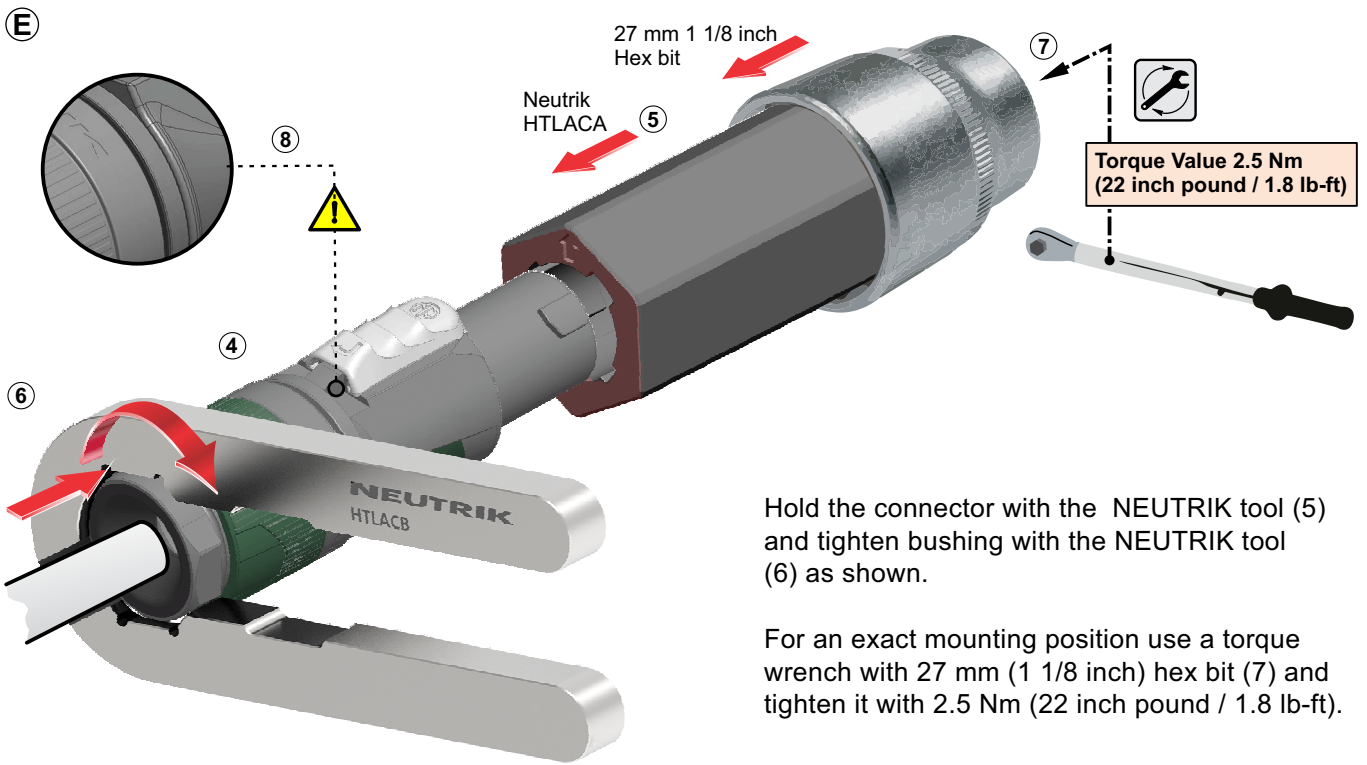


**D** Position chuck (1) on insert (2).

**E** Slide insert (2) with chuck (1) together into housing (3)

Important: Align the chuck by positioning the nose into keyway.



Slide bushing (4) over chuck (1).



Hold the connector with the NEUTRIK tool (5) and tighten bushing with the NEUTRIK tool (6) as shown.

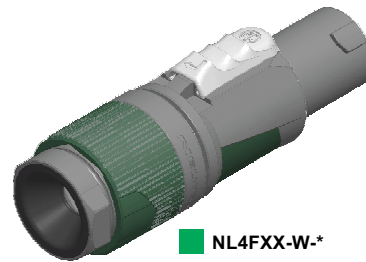
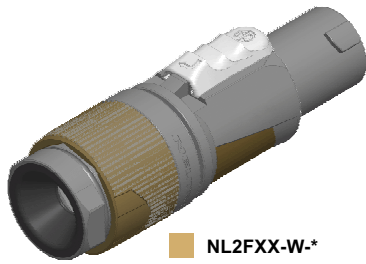
For an exact mounting position use a torque wrench with 27 mm (1 1/8 inch) hex bit (7) and tighten it with 2.5 Nm (22 inch pound / 1.8 lb-ft).

**NEUTRIK tool Information:**

(5)	HTLACA	
(6)	HTLACB	



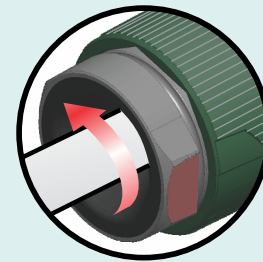
**C FINISHED CONNECTOR**



**D DISASSEMBLY INFORMATION**

**FOR DISASSEMBLY!**

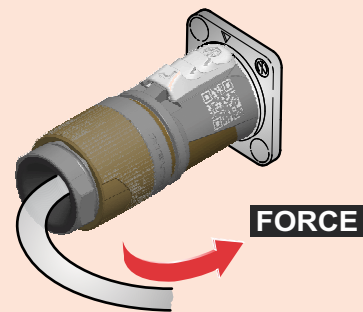
1. Use the Neutrik tool HTLACB.
2. Position the tool on the surfaces and open the clamping sleeve.



**E SAFETY INFORMATION**

**CAUTION**

To ensure protection category, do not expose the connection to bending forces (e.g. do not attach loads to the cable, no free-dangling cable windings etc.).



**SAFETYWARNING**

For safety and certification reasons the connector must be replaced in case of any broken parts or excessive wear and tear.



**F More Information on the [www.neutrik.com](http://www.neutrik.com)**

<https://www.neutrik.com/products/audio/speakon>



Neutrik AG LI T: +423 / 237 24 24 F: +423/232 53 93  
 Neutrik USA Inc. USA T: +1 704 / 972 3050 F: +1 704/438 9202  
 Neutrik (UK) Ltd. UK T: +44 1983 / 811 441 F: +44 1983/811 439  
 Neutrik Vertriebs GmbH DE/NL/AT/DK T: +49 8131 / 280 890 F: +49 8131/280 830

Neutrik France FR T: +33 1/4131 6750 F: +33 1/4131 0511  
 Neutrik Tokyo Ltd. JP T: +81 3/3663 4733 F: +81 3/3663 4796  
 Neutrik Hong Kong Ltd. HK T: +852/2687 6055 F: +852/2687 6052

Draft. Nr.: BDA 638 V2 | Update: 2022-08-11 | Data subject to change without prior notice. © 2022 NEUTRIK®. NEUTRIK® are registered trademark of Neutrik AG. ALL RIGHTS RESERVED.