

HT45, HT420



Grid cap HT45,
3138M11070

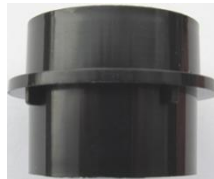


Grid cap HT420
3138M11030



Capsule HT45,
1400M40010

+



Capsule holder,
3138Z12010



Capsule HT420,
2610Z00320



Battery cover,
2931Z13020



Foam pad,
2931Z39010



Stand adapter SA63,
6001H63010

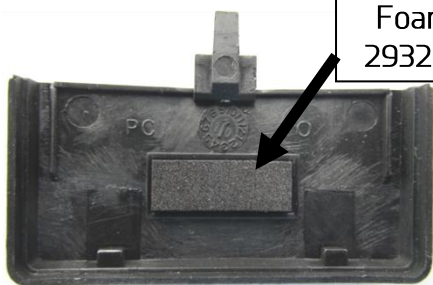
PT45, PT420



Battery cover
2932Z13090

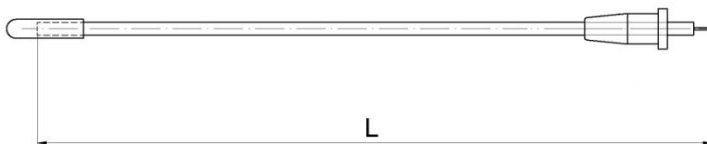


Battery cover
2932Z13100



Foam pad,
2932Z21010

Antenna,
3002M21910



MKGL,
0110E03210



Belt clip
2932Z16010

Band	„L“ length in mm	Frequency range MHz
A	125	530 – 560
U	109	606 – 630
B	87	748 – 778
C	81	790 – 820
M	79	826 – 832
D	79	863 – 865
K	68	925 – 932

SR45, SR420



Antenna SR420
Bd A, 5042776
Bd U, 5042777
Bd B, 5042778
Bd D, 5042779
Bd K, 5042780
Bd M, 0018E02240



Powersupply
7801H00130