



PRODUCT
CATALOGUE
2015

always on the
move.



In just a short time, **Cameo® Light** has developed into a leading brand for professional lighting equipment. Our portfolio includes over 100 innovative LED lighting products and accessories for a wide variety of applications – ranging from small clubs to complex rigs at major events.

2015 is full of plans and ideas for the development and production of sophisticated new products. Using state of the art technology as well as energy-efficient and long-lasting LED technology, we are working hard to implement the ideas and requirements of our users.

We look forward to receiving your feedback and wish you a lot of fun with the **Cameo®** 2015 catalogue!

Your **Cameo® Light** Team



In wenigen Jahren hat sich **Cameo® Light** zu einer bedeutenden Marke für professionelles Lichtequipment entwickelt. Unser Portfolio umfasst derzeit über 100 innovative LED-Lichtprodukte und Accessoires für die unterschiedlichsten Anwendungen – von kleinen Clubs bis hin zu komplexen Riggs auf Großveranstaltungen.

Auch das Jahr 2015 ist voller Pläne und Ideen für die Weiterentwicklung und Herstellung ausgereifter Produktneuheiten. Unter dem Einsatz modernster Technologie sowie energieeffizienter und langlebiger LED-Technik, ist es unser Ziel, die Ideen und Anforderungen unserer Nutzer umzusetzen.

Wir freuen uns auf Ihr Feedback und wünschen viel Spaß mit dem **Cameo®** Katalog 2015!

Ihr **Cameo® Light** Team



En pocos años, **Cameo® Light** se ha convertido en una empresa destacada en el sector de equipos profesionales de iluminación. Nuestro catálogo de productos incluye actualmente más de 100 innovadores productos y accesorios de iluminación LED para una amplia gama de aplicaciones, desde pequeños clubes hasta complejas instalaciones en grandes escenarios.

El año 2015 también viene repleto de planes e ideas para desarrollar y fabricar nuevos productos avanzados. Mediante el uso de la tecnología más avanzada y de la iluminación LED energéticamente eficiente y duradera, tenemos como objetivo llevar a la práctica las ideas y demandas de nuestros usuarios.

Estaremos encantados de recibir sus sugerencias y esperamos que disfrute con nuestro catálogo de **Cameo®** 2015.

El equipo de **Cameo® Light**



En quelques années seulement, **Cameo® Light** est devenue l'une des marques les plus appréciées dans le domaine des éclairages scéniques professionnels. Notre catalogue offre aujourd'hui plus de 100 produits à LED innovants, ainsi que leurs accessoires, pour répondre aux applications les plus variées – des petits clubs aux installations ou concerts les plus complexes.

Nous travaillons sur une multitude de projets et d'idées pour l'année 2015, qui verra le développement et la présentation de nombreuses nouveautés. En utilisant les technologies les plus modernes dont la technologie LED, synonyme d'efficacité énergétique et de durée de vie élevée, notre but est de créer les produits imaginés et réclamés par nos utilisateurs.

N'hésitez pas à nous faire part de vos remarques, idées ou besoins! Nous espérons que vous apprécierez notre Catalogue **Cameo®** 2015!

Votre équipe **Cameo® Light**

www.cameolight.com

cameo® is a brand of the Adam Hall Group.



www.facebook.com/cameolightandsound
www.youtube.com/cameolightandsound
blog.adamhall.com

TABLE OF **CONTENT**

LED **MOVING HEADS** **04**

LED **SCANNERS** **08**

LED STANDARD **PAR CANS** **12**

LED FLAT **PAR CANS** **30**

LED STUDIO **PAR CANS** **38**

LED OUTDOOR **PAR CANS** **56**

LED **SETS** **62**

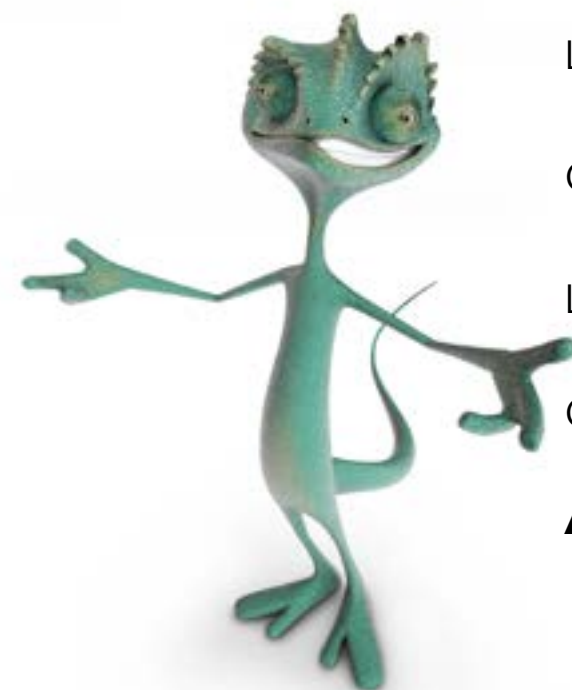
LED **BAR** **70**

COB LED **STROBES** **74**

LED LIGHT **EFFECTS** **78**

CAMEO® **FLUIDS** **88**

ACCESSORIES **90**





MOVING HEAD 60 W

LED MOVING HEAD RGB 60 W

The Cameo® CLMHRGB60W is a moving head powered by an energy-efficient ultra high luminosity 60-Watt white LED. It allows for DMX control in 8 and 13-channel modes and standalone operation with automated programs and sound activation to the beat of the music. An LED display and Mode, Enter, Value Up and Value Down keys provide easy manual control. The unit features seven 21 mm gobos plus an open spot and 9 deeply saturated colours. With 540° pan and 270° tilt capabilities and dimmer, shutter, focus control, prism and high speed strobe functions the CLMHRGB60W is a versatile tool for creative lighting design and stunning effects.

- ▶ 60 W Ultra High Power CREE LED
- ▶ 8 brilliant colours
- ▶ 7 different gobos
- ▶ Fast 540° pan and 270° tilt capability
- ▶ Operated via DMX, in master/slave mode or standalone mode
- ▶ Integrated microphone for sound control
- ▶ Simple to operate using the four buttons and LED display



WATCH THE DEMO-VIDEO:



Model Name:	CLMHRGB60W
Product Type:	LED Moving Light
Type:	Moving Head
Colour Range:	8 Channel Multi Colour + white
Number of LEDs:	1
LED Type:	60W
Number of Gobos:	7 + open
Gobo Size:	21 mm
DMX Input:	XLR 3-pole
DMX Output:	XLR 3-pole
DMX Mode:	8/13-channel
DMX Functions:	PAN, TILT, Colour Wheel, Gobo Wheel, Shutter, Dimmer, Program, focus control, prism
PAN Movement:	within 540°
TILT Movement:	within 270°
High Speed Strobe:	> 30 Hz
Standalone Modes:	Auto Run, Sound Control, Show
Controls:	Mode, Enter, Value Up, Value Down
Indicators:	LED Display
Power Supply	230 V AC
Power Consumption	100 W
Power Connector:	IECC Euro Power Socket male
Housing Material:	ABS / Metal
Housing Colour:	Black
Type of Cooling:	Fan
Illuminance (lx @ 1m):	40000 lx
Dimensions (without mounting bracket):	230 x 275 x 320 mm



MOVING HEAD 25 W
LED MOVING HEAD RGB 25 W

The Cameo® CLMHRGB25W is a compact lightweight moving head with a high-efficiency, low power consumption 25-Watt white LED featuring XLR connectors for DMX input and output, an IEC power socket and fan cooling. Seven 21 mm gobos plus an open spot, a range of 8 vivid colours + white and the 540° pan and 270° tilt capability provide a rich palette of lighting options augmented by dimmer, shutter and high pulse rate strobe functions. Besides 6 and 11-channel DMX control the CLMHRGB25W can also be operated as a standalone including auto run and sound activation modes.

- ▶ 25 W Ultra High Power CREE LED
- ▶ 8 brilliant colours
- ▶ 7 different gobos
- ▶ Fast 540° pan and 270° tilt capability
- ▶ Operated via DMX, in master/slave mode or standalone mode
- ▶ Integrated microphone for sound control
- ▶ Simple to operate using the four buttons and LED display



WATCH THE DEMO-VIDEO:



Model Name:	CLMHRGB25W
Product Type:	LED Moving Light
Type:	Moving Head
Colour Range:	8-Channel Multi Colour + white
Number of LEDs:	1
LED Type:	25W
Number of Gobos:	7 + open
Gobo Size:	21 mm
DMX Input:	XLR 3-pole
DMX Output:	XLR 3-pole
DMX Mode:	6/11-Channel
DMX Functions:	PAN, TILT, Colour Wheel, Gobo Wheel, Shutter, Dimmer, Program
PAN Movement:	within 540°
TILT Movement:	within 270°
High Speed Strobe:	> 30 Hz
Standalone Modes:	Auto Run, Sound Control, Show
Controls:	Mode, Enter, Value Up, Value Down
Indicators:	LED Display
Power Supply	230 V AC
Power Consumption	100W
Power Connector:	IECC Euro Power Socket male
Housing Material:	ABS/Metal
Housing Colour:	Black
Type of Cooling:	Fan
Illuminance (lx @ 1m):	8000 lx
Dimensions (without mounting bracket):	230 x 275 x 320 mm



GOBO **SCANNER** 60 W

LED GOBO SCANNER LIGHTING 60 W

The Cameo® CLSCAN60W is a feature-packed LED scanner with rotatable prism and motorized focus for crisp and detailed gobo projection. It uses a powerful 60-Watt white LED by industry leader Cree for intense luminosity, long life and low power consumption. The CLSCAN60W is capable of 10-channel mode DMX, master, slave and standalone operation including automated programs and sound activation to the beat of the music. With a selection of 9 saturated colours, 7 gobos plus open spot, 180° pan and 90° tilt the Cameo® CLSCAN60W allows for highly flexible lighting design and prism effects enhanced by the high speed strobe, dimming and shutter functions.

- ▶ 60 W Ultra High Power CREE LED
- ▶ 8 brilliant colours
- ▶ 7 different gobos
- ▶ Operated via DMX, in master/slave mode or standalone mode
- ▶ Integrated microphone for sound control
- ▶ Simple to operate using the four buttons and LED display
- ▶ Universal mounting bracket included
- ▶ Compact, sturdy metal housing



WATCH THE DEMO-VIDEO:



Model Name:	CLSCAN60W
Product Type:	LED Moving Light
Type:	Scanner
Colour Range:	8 Channel Multi Colour + white
Number of LEDs:	1
LED Type:	60 W
Number of Gobos:	7 + open
DMX Input:	XLR 3-pole
DMX Output:	XLR 3-pole
DMX Mode:	10-channel
DMX Functions:	PAN, TILT, Colour Wheel, Gobo Wheel, Shutter, Dimmer, Program, Focus control, Prism
PAN Movement:	within 180°
TILT Movement:	within 90°
High Speed Strobe:	> 30 Hz
Standalone Modes:	Auto Run, Sound Control
Controls:	Mode, Enter, Value Up, Value Down
Indicators:	LED Display
Power Supply	230 V AC
Power Consumption	90 W
Power Connector:	IECC Euro Power Socket male
Housing Material:	Metal
Housing Colour:	Black
Type of Cooling:	Fan
Illuminance (lx @ 1m):	26000 lx
Dimensions (without mounting bracket):	204 x 150 x 475 mm



GOBO **SCANNER** 25 W

LED GOBO SCANNER LIGHTING 25 W

The key features of the CLSCAN25 are an ultra-bright 25-Watt LED engine, a colour wheel with eight di-chroic colours and a gobo wheel with eleven gobos. With a pan of 180 degrees and a tilt of 90 degrees, the sharply focused light beam in this compact scanner effortlessly reaches every corner of the room. Although the power consumption is a mere 50 Watts, the CLSCAN25 makes a real impression with its high output and brilliant colours. It is actuated either via DMX protocol (3-pole XLR) with seven control channels, in master/slave mode or in standalone mode via the sound control. The CLSCAN25 is operated using four push buttons and an LED display in the scanner head.

- ▶ 25 W Ultra High Power CREE LED
- ▶ 8 brilliant colours
- ▶ 11 different gobos
- ▶ Operated via DMX, in master/slave mode or standalone mode
- ▶ Integrated microphone for sound control
- ▶ Simple to operate using the four buttons and LED display
- ▶ Universal mounting bracket included
- ▶ Compact, sturdy metal housing



WATCH THE DEMO-VIDEO:



Model Name:	CLSCAN25W
Product Type:	LED Moving Light
Type:	Scanner
Colour Range:	8-channel Multi Colour
Number of LEDs:	1
LED Type:	25 W
Number of Gobos:	11 + open
DMX Input:	XLR 3-pole
DMX Output:	XLR 3-pole
DMX Mode:	7-channel
DMX Functions:	PAN, TILT, Colour Wheel, Gobo Wheel, Shutter, Dimmer, Program
PAN Movement:	within 180°
TILT Movement:	within 90°
Standalone Modes:	Auto Run, Sound Control
Controls:	Mode, Enter, Value Up, Value Down
Indicators:	LED Display
Operating voltage:	100 V AC - 240 V AC, 50 - 60 Hz
Power Consumption:	50 W
Power Connector:	IECC Euro Power Socket male
Housing Material:	Metal
Housing Colour:	Black
Type of Cooling:	Fan
Illuminance (lx @ 1m):	4 000 lx
Dimensions (without mounting bracket):	204 x 150 x 465 mm



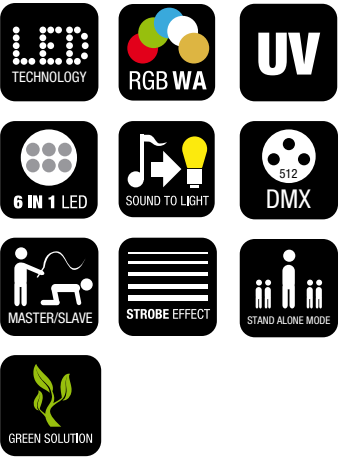
PAR 64 CAN RGBWA+UV

12 X 10 W **LED PAR CAN** RGBAW+UV IN POLISHED OR BLACK HOUSING

The Cameo® CLP64RGBWAU10WPS/BS is a professional PAR 64 light with 25° beam angle and 3.000 Hz refresh rate for flicker-free performance. Available in polished or black aluminium it is equipped with 12 ultra bright 10 watt 6-in-1 LEDs. Their RGBWA+UV spectrum enables rich and highly flexible colour mixing. The high performance CLP64RGBWAU10WPS/BS features 2-channel, 3-channel 1, 3-channel 2 , 6-channel and 9-channel DMX modes and sound control. With numerous functions and integrated programs it also provides master, slave and standalone use. The illuminated LC-display and mode, enter, up and down controls facilitate operation. The CLP64RGBWAU10WPS/BS comes with adjustable twin brackets for variable mounting and a fixed power cord with grounding Schuko plug. It can be powered from any 110 – 250 V AC source.

Model Name:	CLP64RGBWAU10WPS (polished housing) / CLP64RGBWAU10WBS (black housing)
Product Type:	LED Par Can
Type:	PAR 64
Colour Range:	RGBWA + UV
Number of LEDs:	12
LED Type:	10 W 6in1 Colour
Beam Angle:	25°
DMX Input:	XLR 3-pole
DMX Output:	XLR 3-pole
DMX Mode:	2-channel, 3-channel 1, 3-channel 2, 6-channel, 9-channel
DMX Functions:	Colour Fade, Colour Jump, Master Dimmer, RGBWA+UV, Sound Control, Strobe
Standalone Modes:	Colour Jump, Colour Fade, Slave Mode, Sound Control, Static Colour, Colour Macro
Controls:	Mode, Value Down, Value Up, Enter
Indicators:	illuminated LC-Display
Power Connector:	Power cord with Schuko connector (Type E / CEE 7/7)
Housing Material:	Aluminium
Housing Colour:	Polished / Black
Type of cooling:	Fan
Illuminance (lx @ 1m):	16.000 lx
Dimensions (without mounting bracket):	260 x 280 x 300 mm

- ▶ 12 x 10 W Ultra High Power 6in1 RGBAW+UV LEDs
- ▶ Highest flexibility for perfect mixing of solid and pastel colours to warm rich colours and ultra violet
- ▶ Flicker Free
- ▶ Operated via DMX, in master/slave mode or standalone mode
- ▶ Integrated microphone for sound control
- ▶ Simple to operate using the four buttons and LED display
- ▶ Double brackets included as standard
- ▶ Rugged compact aluminum housing



WATCH THE DEMO-VIDEO:





PAR 64 CAN Q 8W

18 X 8W **QUAD COLOUR LED PAR CAN** RGBW
IN POLISHED OR BLACK HOUSING

An extremely powerful LED-PAR in a black or polished housing. The Cameo® CLP64Q8WBS/PS has a total of 18 quad LEDs (RGBW) and thus guarantees perfect mixing of solid and pastel colours – including white. With a power consumption of just 170 Watts, the 8-Watt Quad LEDs produce an impressive level of brightness with a beam angle of 25 degrees. It is quick and easy to operate using four buttons and an LED display on the back. The CLP64Q8WBS/PS is equipped with a super-quiet fan for cooling. The dual bracket permits simple use as a floor PAR. There are three operating modes. In addition to DMX operation with 2, 3, 4 or 7 channels, this LED PAR can also be operated in standalone mode or via sound control. It features an integrated microphone.

- ▶ 18 x 8 W Ultra High Power QUAD RGBW LEDs
- ▶ RGBW for perfect mixing of solid and pastel colours
- ▶ Operated via DMX, in master/slave mode or standalone mode
- ▶ Integrated microphone for sound control
- ▶ Simple to operate using the four buttons and LED display
- ▶ Double brackets included as standard
- ▶ Rugged compact aluminum housing



WATCH THE DEMO-VIDEO:



Model Name:	CLP64Q8WPS (polished housing) / CLP64Q8WBS (black housing)
Product Type:	LED Par Can
Type:	PAR 64
Colour Range:	RGBW
Number of LEDs:	18
LED Type:	8 W QUAD Colour
Beam Angle:	25°
DMX Input:	XLR 3-pole male
DMX Output:	XLR 3-pole female
DMX Mode:	2/3/4/7-channel selectable
DMX Functions:	RGBW, Master Dimmer, Strobe, Sound Control, Colour Jump, Colour Fade
Standalone Modes:	Static Colour, Colour Fading, Colour Jump, Sound Control, Slave
Controls:	Enter, Mode, Value Up, Value Down
Indicators:	LED Display
Power Connector:	Power cord with Schuko connector (Type E / CEE 7/7)
Housing Material:	Aluminium
Housing Colour:	Polished / Black
Type of cooling:	Fan
Illuminance (lx @ 1m):	20.900 lx
Dimensions (without mounting bracket):	260 x 270 x 305 mm



PAR 64 CAN TRI 3 W
18 X 3 W **TRI COLOUR LED PAR CAN** RGB IN POLISHED
OR BLACK HOUSING

Ultra-high performance LED PAR 64 with 18 ultra-bright 3-Watt TRI colour LEDs in a black or polished housing. This high-performance LED PAR has a beam angle of 25 degrees and a power consumption of just 60 Watts. Like all new LED PAR cans, the CLP64TRI3WBS/PS features a sturdy housing. The double bracket makes this PAR can the ideal lamp for use as a floor PAR or for mounting to cross-beams and bars. It is actuated either via the DMX protocol (3-pole XLR) with six control channels, in master/slave mode or standalone mode (sound control, colour change, static colours). It features an integrated microphone and is quick and easy to operate using four buttons and an LED display.

- ▶ 18 x 3 W High Power TRI RGB LEDs
- ▶ Low power consumption
- ▶ Operated via DMX, in master/slave mode or standalone mode
- ▶ Integrated microphone for sound control
- ▶ Simple to operate using the four buttons and LED display
- ▶ Double brackets included as standard
- ▶ Rugged compact aluminum housing



WATCH THE DEMO-VIDEO:



Model Name:	CLP64TRI3WPS (polished housing) / CLP64TRI3WBS (black housing)
Product Type:	LED Par Can
Type:	PAR 64
Colour Range:	RGB
Number of LEDs:	18
LED Type:	3W TRI Colour
Beam Angle:	25°
DMX Input:	XLR 3-pole
DMX Output:	XLR 3-pole
DMX Mode:	6-channel
DMX Functions:	RGB, Master Dimmer, Strobe, Sound Control, Colour Jump, Colour Fade
Standalone Modes:	Static Colour, Colour Change, Colour Fading, Sound Control, Slave
Controls:	Mode, Enter, Value Up, Value Down
Indicators:	LED Display
Power Connector:	Power cord with Schuko connector (Type E / CEE 7/7)
Housing Material:	Aluminium
Housing Colour:	Polished / Black
Type of cooling:	Fan
Illuminance (lx @ 1m):	11.300 lx
Dimensions (without mounting bracket):	260 x 280 x 300 mm



PAR 64 CAN RGB 3W

36 X 3W **LED PAR CAN** RGB IN POLISHED OR BLACK HOUSING

Extremely high-powered LED PAR in a black, short housing. Equipped with dual brackets and a filter frame holder. The Cameo® CLP64RGB3WBS/PS has a total of 36 ultra-bright 3-Watt LEDs (12 x red, 12 x green, 12 x blue) – for perfect colour mixing and rich solid colours. The beam angle is 30 degrees. It is operated using three buttons and an LED display on the back. The CLP64RGB3WBS/PS is equipped with a super-quiet fan for cooling. There are three operating modes. In addition to DMX operation with 2, 3, 4 or 6 channels, this LED PAR can also be operated in standalone mode or via sound control. It has a built-in microphone. The CLP64RGB3WBS/PS has a power consumption of just 150 watts, runs on mains voltages of 100 to 250 volts, and thus can be used universally and worldwide.

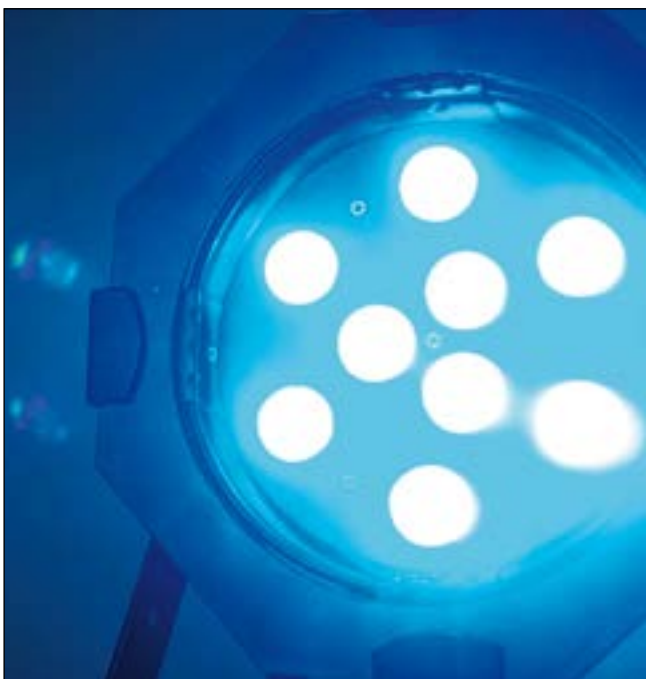
- ▶ 36 x 3 W Ultra High Power RGB LEDs
- ▶ Low power consumption
- ▶ Operated via DMX, in master/slave mode or standalone mode
- ▶ Integrated microphone for sound control
- ▶ Simple to operate using the three buttons and LED display
- ▶ Double brackets included as standard
- ▶ Rugged compact aluminum housing



WATCH THE DEMO-VIDEO:



Model Name:	CLP64RGB3WPS (polished housing) / CLP64RGB3WBS (black housing)
Product Type:	LED Par Can
Type:	PAR 64
Colour Range:	RGB
Number of LEDs:	36
LED Type:	3 W
Beam Angle:	30°
DMX Input:	XLR 3-pole male
DMX Output:	XLR 3-pole female
DMX Mode:	4 / 6-channel selectable
DMX Functions:	RGB, Master Dimmer, Strobe, Sound Control, Colour Jump, Colour Fade
Standalone Modes:	Static Colour, Colour Fading, Colour Jump, Sound Control, Slave
Controls:	Mode, Value Up, Value Down
Indicators:	LED Display
Power Connector:	Power cord with Schuko connector (Type E / CEE 7/7)
Housing Material:	Aluminium
Housing Colour:	Polished / Black
Type of cooling:	Fan
Illuminance (lx @ 1m):	19.500 lx
Dimensions (without mounting bracket):	260 x 270 x 305 mm



PAR 56 CAN TRI RGB 3W

9 X 3 W **TRI COLOUR LED PAR CAN** RGB
IN POLISHED OR BLACK HOUSING

Ultra-high performance LED PAR 56 with 9 extremely bright 3-Watt TRI colour LEDs in a black or polished housing. This high-performance LED PAR has a beam angle of 25 degrees and a power consumption of just 40 Watts. Like all new LED PAR cans, the CLP56TRI3WBS/PS features a sturdy housing. The double bracket makes this PAR can the ideal lamp for use as a floor PAR or for mounting to cross-beams and bars. It is actuated either via the DMX protocol (3-pole XLR) with six control channels, in master/slave or standalone mode (sound control, colour change, solid colours). It features an integrated microphone and is quick and easy to operate using four buttons and an LED display.

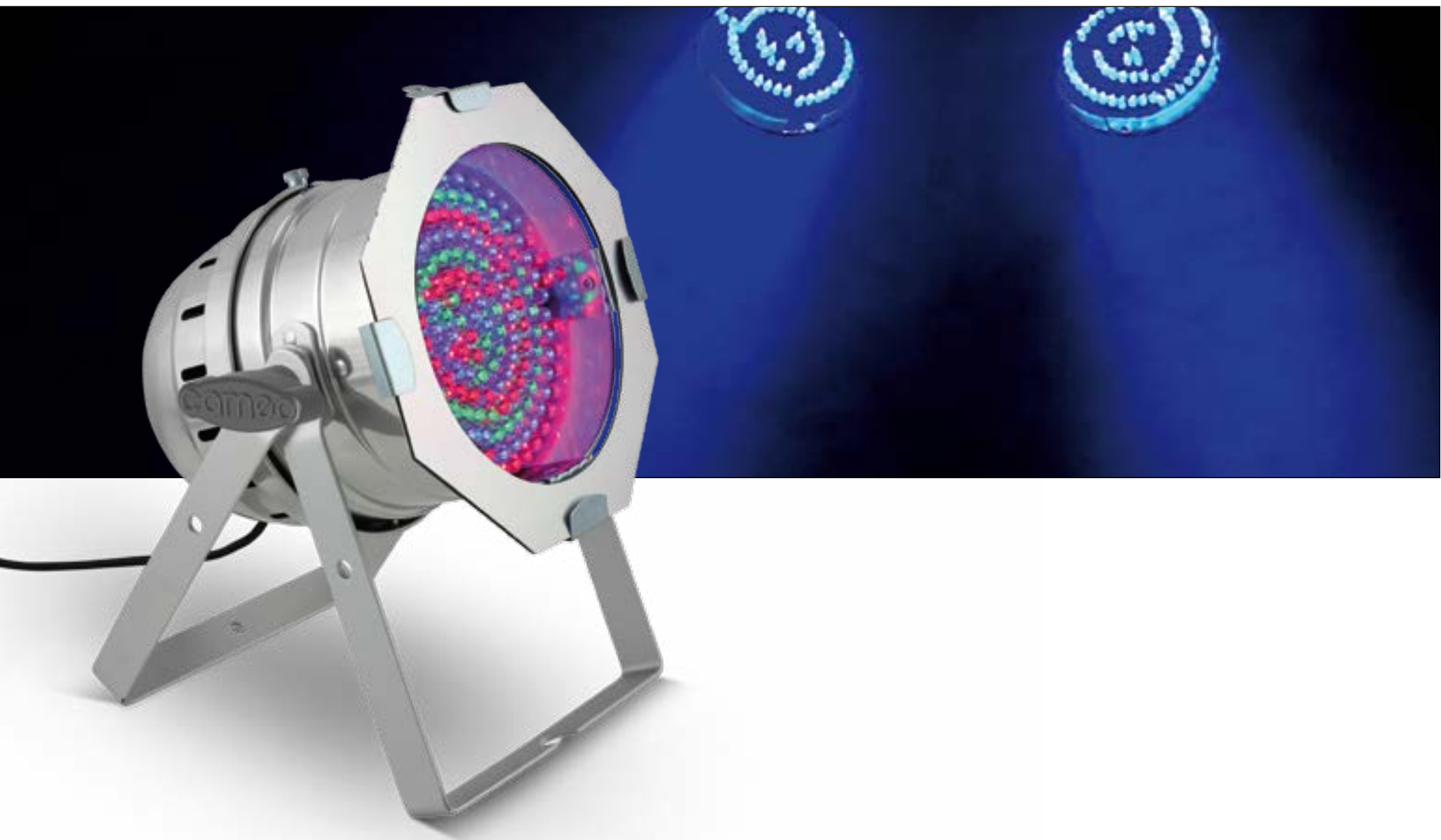
- ▶ 9 x 3 W High Power RGB TRI LEDs
- ▶ Low power consumption
- ▶ Operated via DMX, in master/slave mode or standalone mode
- ▶ Integrated microphone for sound control
- ▶ Simple to operate using the four buttons and LED display
- ▶ Double brackets included as standard
- ▶ Rugged compact aluminum housing



WATCH THE DEMO-VIDEO:



Model Name:	CLP56TRI3WPS (polishes housing) / CLP56TRI3WBS (black housing)
Product Type:	LED Par Can
Type:	PAR 56
Colour Range:	RGB
Number of LEDs:	9
LED Type:	3 W TRI Colour
Beam Angle:	25°
DMX Input:	XLR 3-pole
DMX Output:	XLR 3-pole
DMX Mode:	6-channel
DMX Functions:	RGB, Master Dimmer, Strobe, Colour Jump, Colour Fade
Standalone Modes:	Static Colour, Colour Change, Colour Fading, Sound Control, Slave
Controls:	Mode, Enter, Value Up, Value Down
Indicators:	LED Display
Power Connector:	Power cord with Schuko connector (Type E / CEE 7/7)
Housing Material:	Aluminium
Housing Colour:	Polished / Black
Type of cooling:	Convection
Illuminance (lx @ 1m):	7400 lx
Dimensions (without mounting bracket):	230 x 250 x 260 mm



PAR 64 CAN RGB 10

177 X 10 MM **LED PAR CAN** RGB IN POLISHED OR BLACK HOUSING

The Cameo® CLP64RGB10BS/PS is a professional PAR 64 spotlight in a traditional aluminium housing with 177 bright, long-lasting 10mm LEDs in the colours red, green, blue, and amber (RGBA system). Two adjustable brackets with knurled locking screws permit use as a floor spot and mounting on traverses, walls, and ceilings. The beam angle is 25°. The CLP64RGB10BS/PS can be controlled in 7-channel DMX mode or in standalone mode, in each case with six functions. It is operated using buttons for mode, enter, up, and down. A 4-position LED display indicates the corresponding setting. XLR sockets serve as DMX in- and outputs for controlling several spotlights in series. Additional advantages are a low power consumption of just 30-Watt and minimal generation of heat. The spotlight is available in black or polished.

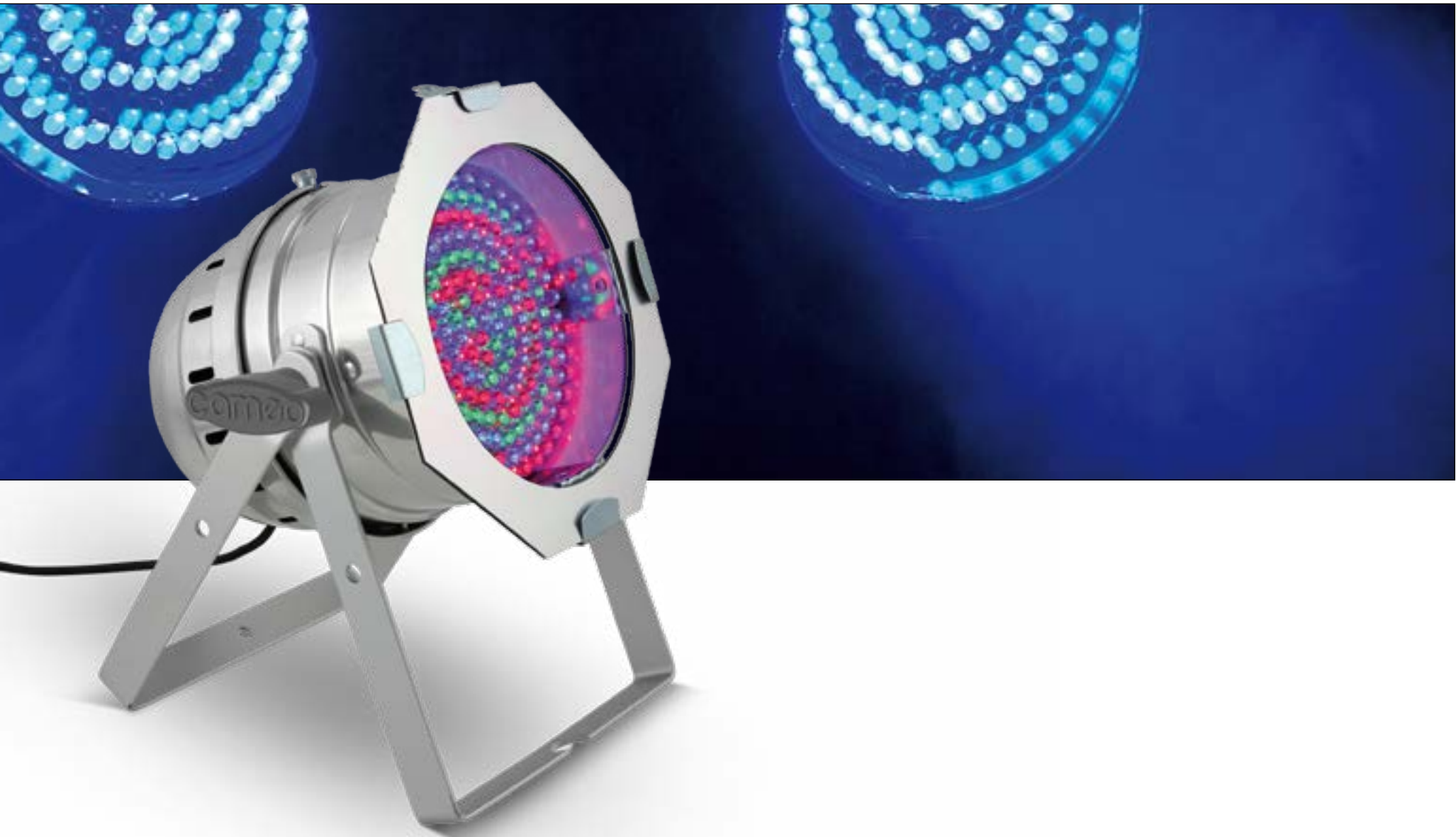
- ▶ Powerful 177 x 10 mm RGBA LEDs
- ▶ RGBA for warm, rich colour mixing
- ▶ Operated via DMX, in master/slave mode or standalone mode
- ▶ Integrated microphone for sound control
- ▶ Simple to operate using the four buttons and LED display
- ▶ Double brackets included as standard
- ▶ Rugged compact aluminum housing



WATCH THE DEMO-VIDEO:



Model Name:	CLP64RGB10PS (polished housing) / CLP64RGB10BS (black housing)
Product Type:	LED Par Can
Type:	PAR 64
Colour Range:	RGBA
Number of LEDs:	177
LED Type:	10 mm
Beam Angle:	25°
DMX Input:	XLR 3-pole male
DMX Output:	XLR 3-pole female
DMX Mode:	7-channel
DMX Functions:	RGBA, Master Dimmer, Strobe, Colour Jump, Colour Fade
Standalone Modes:	Static Colour, Colour Change, Colour Fading, Sound Control, Slave Mode
Controls:	Mode, Enter, Value Up, Value Down
Indicators:	LED Display
Power Connector:	Power cord with Schuko connector (Type E / CEE 7/7)
Housing Material:	Aluminium
Housing Colour:	Polished / Black
Type of cooling:	Convection
Illuminance (lx @ 1m):	2600 lx
Dimensions (without mounting bracket):	265 x 270 x 280 mm



PAR 64 CAN RGB 10

183 X 10 MM **LED PAR CAN** RGB IN POLISHED OR BLACK HOUSING

Professional PAR can with 183 ultra-bright 10-mm LEDs in the RGB colour system (60 x red, 60 x green, 63 x blue) in a conventional sturdy aluminium housing and with a beam angle of 25 degrees. Featuring a double bracket, the CLP64RGB10BS/PS PAR is suitable for use both as a floor PAR and for mounting to cross-beams and bars. Actuation is either via the DMX protocol (3-pole XLR) with four or six control channels, in master/slave mode or standalone mode (sound control, colour change, solid colours). It is controlled by three buttons and an LED display. Its power consumption is a mere 30 Watts.

- ▶ Powerful 183 x 10 mm RGB LEDs
- ▶ Low power consumption
- ▶ Operated via DMX, in master/slave mode or standalone mode
- ▶ Integrated microphone for sound control
- ▶ Simple to operate using the three buttons and LED display
- ▶ Double brackets included as standard
- ▶ Rugged compact aluminum housing



WATCH THE DEMO-VIDEO:



Model Name:	CLP64RGB10PS (polished housing) / CLP64RGB10BS (black housing)
Product Type:	LED Par Can
Type:	PAR 64
Colour Range:	RGB
Number of LEDs:	183
LED Type:	10 mm
Beam Angle:	25°
DMX Input:	XLR 3-pole
DMX Output:	XLR 3-pole
DMX Mode:	4 / 6-channel selectable
DMX Functions:	RGB, Master Dimmer, Strobe, Sound Control, Colour Jump, Colour Fade
Standalone Modes:	Static Colour, Colour Change, Colour Fading, Sound Control, Slave
Controls:	Mode, Value Up, Value Down
Indicators:	LED Display
Power Connector:	Power cord with Schuko connector (Type E / CEE 7/7)
Housing Material:	Aluminium
Housing Colour:	Polished / Black
Type of cooling:	Convection
Illuminance (lx @ 1m):	2050 lx
Dimensions (without mounting bracket):	265 x 270 x 280 mm



PAR 56 CAN RGB 10 MM

108 X 10 MM **LED PAR CAN** RGB IN POLISHED OR BLACK HOUSING

Professional PAR can with 108 ultra-bright LEDs (36 x red, 36 x green, 36 x blue) and RGB colour system in a sturdy aluminium housing and a beam angle of 25 degrees. Featuring a double bracket, the CLP56RGB10PS/BS is suitable for use both as a floor PAR and for mounting to cross-beams and bars. It is actuated either via DMX protocol (3-pole XLR) with three and six control channels, in master/slave mode or in standalone mode (sound control, colour change, solid colours). It is controlled by three buttons and an LED display. The power consumption of the CLP56RGB10PS/BS is a mere 20 Watts.

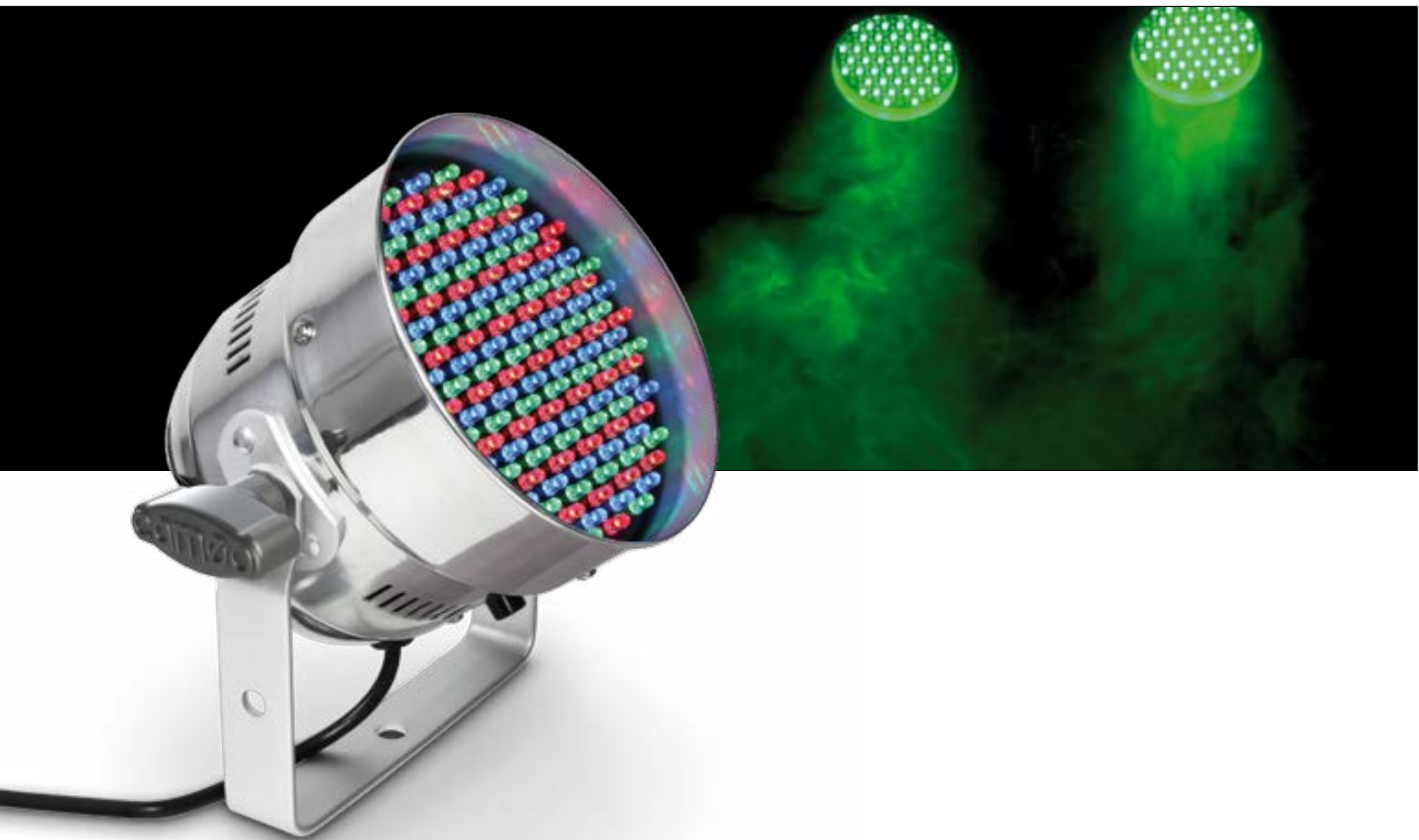
- ▶ 108 powerful 10mm RGB LEDs
- ▶ Low power consumption
- ▶ Operated via DMX, in master/slave mode or standalone mode
- ▶ Integrated microphone for sound control
- ▶ Simple to operate using the three buttons and LED display
- ▶ Double brackets included as standard
- ▶ Rugged compact aluminum housing



WATCH THE DEMO-VIDEO:



Model Name:	CLP56RGB10PS (polished housing) / CLP56RGB10BS (black housing)
Product Type:	LED Par Can
Type:	PAR 56
Colour Range:	RGB
Number of LEDs:	108
LED Type:	10 mm
Beam Angle:	25°
DMX Input:	XLR 3-pole
DMX Output:	XLR 3-pole
DMX Mode:	4 / 6-channel selectable
DMX Functions:	RGB, Master Dimmer, Strobe, Sound Control, Colour Jump, Colour Fade
Standalone Modes:	Static Colour, Colour Change, Colour Fading, Sound Control, Slave
Controls:	Mode, Value Up, Value Down
Indicators:	LED Display
Power Connector:	Power cord with Schuko connector (Type E / CEE 7/7)
Housing Material:	Aluminium
Housing Colour:	Polished / Black
Type of cooling:	Convection
Illuminance (lx @ 1m):	1220 lx
Dimensions (without mounting bracket):	230 x 250 x 260 mm



PAR 56 CAN RGB 5 MM

151 X 5 MM **LED PAR CAN** RGB IN POLISHED OR BLACK HOUSING

The CLP56RGB05PS/BS is a traditional PAR 56 can that's high-tech on the inside. 151 ultra-bright LEDs (51 x red, 49 x green, 51 x blue) create an optimal colour mix and awe-inspiring lighting. The CLP56RGB05PS/BS has a beam angle of 25 degrees and at just 23-Watt, its power consumption is at least ten times lower than that of conventional PAR cans. The CLP56RGB05PS/BS has three operating modes DMX (with four or six control channels), standalone (steady light, colour gradient) or music-controlled (via an integrated microphone). All settings can be configured quickly and easily using the three buttons and the LED on the back.

- ▶ 151 powerful RGB LEDs
- ▶ Low power consumption
- ▶ Operated via DMX, in master/slave mode or standalone mode
- ▶ Integrated microphone for sound control
- ▶ Simple to operate using the three buttons and LED display
- ▶ Rugged compact aluminum housing



WATCH THE DEMO-VIDEO:



Model Name:	CLP56RGB05PS (polished housing) / CLP56RGB05BS (black housing)
Product Type:	LED Par Can
Type:	PAR 56
Colour Range:	RGB
Number of LEDs:	151
LED Type:	5 mm
Beam Angle:	25°
DMX Input:	XLR 3-pole
DMX Output:	XLR 3-pole
DMX Mode:	4 / 6-channel selectable
DMX Functions:	RGB, Master Dimmer, Strobe, Sound Control, Colour Jump, Colour Fade
Standalone Modes:	Static Colour, Colour Change, Colour Fading, Sound Control, Slave
Controls:	Mode, Value Up, Value Down
Indicators:	LED Display
Power Connector:	Power cord with Schuko connector (Type E / CEE 7/7)
Housing Material:	Aluminium
Housing Colour:	Polished / Black
Type of cooling:	Convection
Illuminance (lx @ 1m):	900 lx
Dimensions (without mounting bracket):	170 x 170 x 169 mm



CLPFLATPRO18

CLPFLATPRO12

CLPFLATPRO07

- High performance thanks to ultra bright 10W LEDs
- Super silent due to convection cooling
- RGBWA colour spectrum for more flexible colour mixing reaching from warm, rich to solid and pastel colours
- Flicker Free
- Professional connectivity with Neutrik PowerCon in/out and 3 and 5-pol DMX IN and Outputs
- Rugged flat and compact metal housing



WATCH THE DEMO-VIDEO:



LED FLAT **PAR CANS**



FLAT PRO SERIES INDOOR 10 W **LED PAR CAN** RGBWA IN BLACK HOUSING

With their RGBWA spectrum the Cameo® FLAT PRO SERIES professional PAR lights support stunning, highly creative lighting design. High performance ultra bright 10 watt LEDs produce a huge range of colours from soft pastel hues to rich, warm tints with a 30° beam angle while the FLAT PRO lights' 3.000 Hz refresh rate eliminates flicker. Designed for indoor use the CLPFLATPRO07, CLPFLATPRO12 and CLPFLATPRO18 vary in their dimensions and number of LEDs only. They feature 5 DMX modes with numerous functions, integrated programs and a built-in microphone for sound control. Incorporating a illuminated LC-display with 4 controls for easy manual operation the CLPFLATPRO07, CLPFLATPRO12 and CLPFLATPRO18 also provide master, slave and standalone capability. With black die-cast enclosures and convection cooling the FLAT PRO SERIES PAR lights are super silent. They include both 3-pin and 5-pin XLR inputs and outputs for the DMX signal and Neutrik PowerCon sockets for mains supply and daisy-chaining. The multifunctional bracket design offers a wide variety of mounting options.

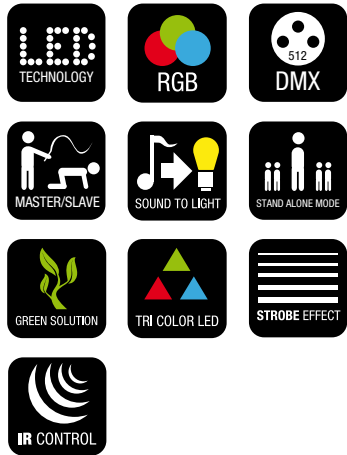
Model Name:	CLPFLATPRO18 / CLPFLATPRO12 / CLPFLATPRO07
Product Type:	LED Par Can
Type:	Flat PAR
Colour Range:	RGBWA
Number of LEDs:	18/12/7
LED Type:	10W
Beam Angle:	30°
DMX Input:	XLR 3-pole, XLR 5-pole
DMX Output:	XLR 3-pole, XLR 5-pole
DMX Mode:	2-channel, 3-channel-1, 3-channel-2, 5-channel, 8-channel
DMX Functions:	Colour Jump, Colour Fade, Strobe, Master Dimmer, RGBWA, Sound Control
Standalone Modes:	Colour Jump, Colour Fade, Static Colour, Sound Control, Slave Mode, Colour Macro
Controls:	Mode, Enter, Value Up, Value Down
Indicators:	illuminated LC-Display
Power Connector:	Neutrik PowerCon in/out
Housing Material:	Metal
Housing Colour:	Black
Type of cooling:	Convection
Illuminance (lx @ 1m):	28000 lx / 16000 lx / 12000 lx
Dimensions (without mounting bracket):	280 x 280 x 130 mm / 230 x 230 x 135 mm / 180 x 180 x 133 mm



Optional
IR remote control

CLPFLAT1REMOTE

- ▶ With IR-remote control capability
- ▶ Low power consumption
- ▶ Power in / out for daisy chaining up to 10 units
- ▶ Operated via DMX, in master/slave mode or standalone mode or optional IR-remote
- ▶ Integrated microphone for sound control
- ▶ Simple to operate using the four buttons and LED display
- ▶ Double brackets included as standard
- ▶ Flat and compact ABS housing



WATCH THE DEMO-VIDEO:



Also available:

Set including 4 units
+ 1 remote control

**CLPFLAT1TRI3WIRSET1 /
CLPFLAT1TRI3WIRWHSET1**



FLAT PAR CAN TRI 3W IR

7 X 3W TRI COLOUR LED PAR CAN RGB IN BLACK OR WHITE HOUSING

The Cameo® CLPFLAT1TRI3WIR is a very flat, luminous PAR projector with seven 3 watt high power TRI LEDs, RGB colour spectrum, a 30° beam angle, rich features and lighting effects. It works completely silently. Thanks to minimal heat generation, no fan is required.

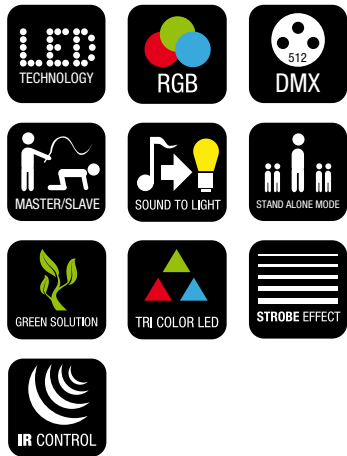
The CLPFLAT1TRI3WIR can be operated via an infrared remote control, 4 DMX modes, the integrated display with control buttons for Menu, Enter, Up and Down or external sound sources and as a master, slave and standalone.

Model Name:	CLPFLAT1TRI3WIR (black housing) / CLPFLAT1TRI3WIRWH (white housing)
Product Type:	LED PAR Can
Type:	FLAT PAR
Colour Range:	RGB
Number of LEDs:	7
LED Type:	3W TRI Colour
Dispersion:	30
DMX Input:	XLR 3-pin male
DMX Output:	XLR 3-pin female
DMX Mode:	3-channel 2, 3-channel 1, 2-channel, 6-channel
DMX Functions:	Strobe, Colour Jump, Sound Control, RGB, Colour Fade, Master Dimmer
Standalone Modes:	Slave Mode, Sound Control, Static Colour, Colour Fade, Colour Jump, Colour Macro
Controls:	Mode, Enter, Value Up, Value Down
Indicators:	LED-Display
Power Supply	100 V AC - 240 V AC, 50 - 60 Hz
Power Consumption	25 W
Power Connector:	IEC power connector male, IEC power connector female
Housing Material:	ABS plastic
Housing Colour:	Black, White
Illuminance (lx @ 1m):	4100
Dimensions:	180 x 175 x 115 mm



Optional
IR remote control
CLPFLAT1REMOTE

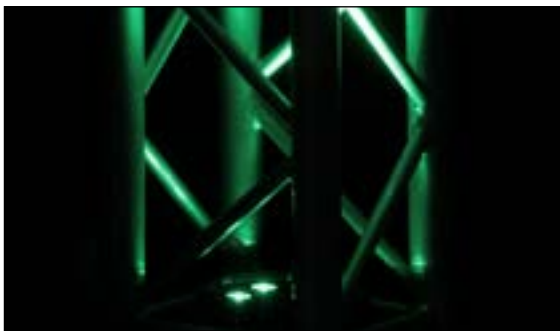
- ▶ With IR remote control option
- ▶ Low power consumption
- ▶ Current input and output connectors for daisy-chaining up to 10 devices
- ▶ Operation by DMX, master/slave mode, as a single projector or via the optional IR remote control
- ▶ Built-in microphone for sound-control mode
- ▶ Simple to operate using the four buttons and LED display
- ▶ Double mounting bracket included in the delivery
- ▶ Flat, compact ABS housing



WATCH THE DEMO-VIDEO:



Also available:
Set including 4 units
+ 1 remote control
CLPFLAT1TRI5X3WSET1



FLAT PAR CAN TRI 5X3W IR FLAT PAR PROJECTOR WITH 5 X 3 W HIGH POWER TRI COLOUR RGB LEDS IN BLACK HOUSING

The Cameo® CLPFLAT1TRI5X3WIR is a flat PAR projector with 5 brilliant 3 Watt TRI colour LEDs for RGB colour mixing, with a 30° beam angle and an intensity of 3850 Lux. RGB colour spectrum. Due to its minimal heat emission, it doesn't need a fan and works absolutely noiselessly. The CLPFLAT1TRI5X3WIR can be flexibly controlled via an optional infrared remote control, 4 DMX modes and a bright display with buttons for Menu, Enter, Up and Down. It can be operated as a master, slave and standalone with multiple functions and is equipped with a microphone for music control. The compact black plastic ABS housing has XLR connectors for input and forwarding of the DMX signal; IEC connectors are used to connect to mains and output. Thus, a maximum of 10 projectors can be connected in series; an adjustable double bracket offers variable mounting options. The Cameo® CLPFLAT1TRI5X3WIR is also attractive due to its low power consumption of only 20 watts.

Model Name:	CLPFLAT1TRI5X3WIR
Product Type:	LED Par Can
Type:	Flat PAR
Colour Range:	RGB
Number of LEDs:	5
LED Type:	3W TRI Colour
Dispersion:	30°
DMX Input:	XLR 3-pin male
DMX Output:	XLR 3-pin female
DMX Mode:	6-channel, 3-channel 2, 3-channel 1, 2-channel
DMX Functions:	Sound Control, RGB, Colour Jump, Master Dimmer, Colour Fade, Strobe
Standalone Modes:	Static Colour, Sound Control, Slave Mode, Colour Jump, Colour Fade
Controls:	Mode, Value Down, Value Up, Enter
Display:	LED Display
Operationg Voltage:	110VAC - 240VAC / 50 - 60 Hz
Power Consumption:	20W
Power Connector:	IEC power connector male, IEC power connector female
Housing Material:	ABS plastic
Housing Colour:	Black
Type of Cooling:	Convection
Illuminance (lx @ 1m):	3850 lx
Dimensions (without mounting bracket):	180 x 175 x 115 mm



Optional
IR remote control

CLPFLAT1REMOTE

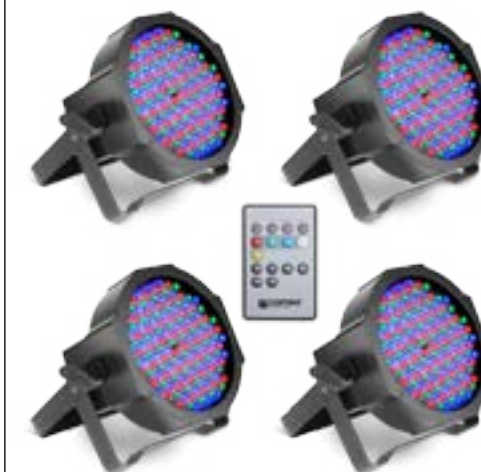
- ▶ Extremely bright Spotlight in a flat and lightweight ABS housing
- ▶ Optional IR-Remote available (CLPFLAT1REMOTE)
- ▶ Very low power consumption
- ▶ Power in / out for daisy chaining up to 10 units



WATCH THE DEMO-VIDEO:



LED FLAT **PAR CANS**



Also available:
Set including 4 units
+ 1 remote control

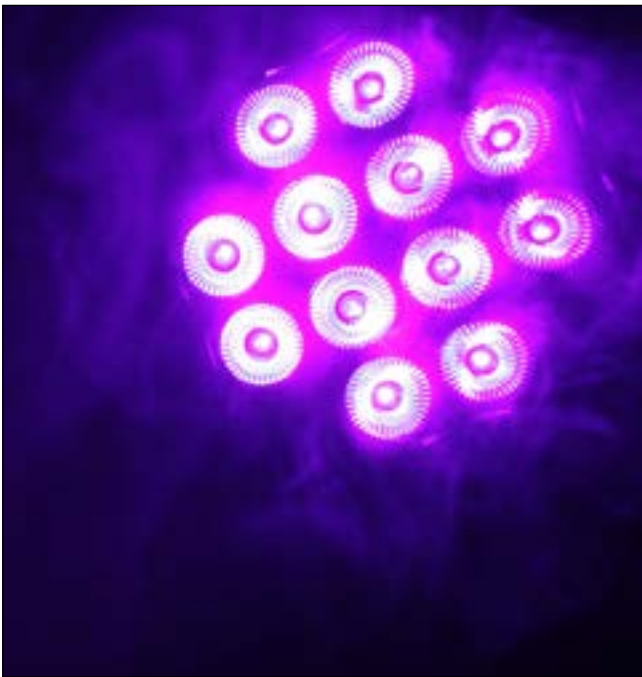
**CLPFLAT1RGB10IRSET1 /
CLPFLAT1RGB10IRWHSET1**



FLAT PAR CAN RGB 144 X 10 MM **FLAT LED RGB PAR** SPOT LIGHT IN BLACK OR WHITE HOUSING

The Cameo® CLPFLAT1RGB10IR is a flat and lightweight PAR light with RGB colours and 14° beam angle providing a variety of functions and lighting effects. A total of 144 large extremely powerful 10 mm LEDs provide rich and radiant colour mixing while convection cooling allows for noise-free operation. The compact black ABS enclosure of the CLPFLAT1RGB10IR incorporates adjustable twin brackets, DMX input and output on XLR connectors and IEC power connectors for daisy chaining up to 10 units. The Cameo® CLPFLAT1RGB10IR features IR remote control capability, 4 DMX modes, sound control and a display with mode, enter, up and down keys. It can be used as master, slave and standalone, and at 15 watts only the unit's power consumption is extremely low. An IR remote control is available as accessory (CLPFLAT1REMOTE).

Model Name:	CLPFLAT1RGB10IR (black housing) / CLPFLAT1RGB10IRWH (white housing)
Product Type:	LED Par Can
Type:	Flat PAR
Colour Range:	RGB
Number of LEDs:	144 (48 x Red, 48 x Green, 48 x Blue)
LED Type:	10 mm
Beam Angle:	14°
DMX Input:	XLR 3-pole
DMX Output:	XLR 3-pole
DMX Mode:	2-channel, 3-channel 1, 3-channel 2, 6-channel
DMX Functions:	Colour Fade, Colour Jump, Master Dimmer, RGB, Sound, Control, Strobe
Standalone Modes:	Colour Jump, Colour Fade, Slave Mode, Sound, Control, Static Colour, Colour Macro
Controls:	Mode, Value Down, Value Up, Enter
Indicators:	LED Display
Power Connector:	IEC connector male/female
Housing Material:	ABS
Housing Colour:	Black, White
Type of cooling:	Convection
Illuminance (lx @ 1m):	4000 lx
Dimensions (without mounting bracket):	180 x 175 x 115 mm



STUDIO PAR 64 CAN RGBWA+UV

12 X 12 W **QUAD COLOUR LED PAR LIGHT**

RGBWA+UV IN BLACK HOUSING

The Cameo® CLPST64RGBWAU12W is a professional PAR 64 projector with a 25° dispersion angle in a sturdy black housing made of cast metal with 12 bright 12 Watt 6-in-1 LEDs . The RGBWA+UV system allows for a creative lighting design with subtle pastel colours as well as brilliant, saturated colours. The refresh rate of 3000 Hz provides for flicker-free operation.

- ▶ 12 x 12 W Ultra High Power RGBWA+UV LEDs
- ▶ Highest flexibility for perfect mixing of solid, pastel colours to warm rich colours and ultra violet
- ▶ Flicker Free with a refresh rate of 3000Hz
- ▶ Operation via DMX, in Master /Slave mode or as a single projector
- ▶ 5 DMX modes for flexible operation
- ▶ Built-in microphone for sound-control mode
- ▶ Simple to operate using the four buttons and LC-display
- ▶ Original Neutrik Powercon In- and Outputs
- ▶ Sturdy metal housing with double brackets



WATCH THE DEMO-VIDEO:



Model Name:	CLPST64RGBWAU12W
Product Type:	LED Par Can
Type:	PAR 64
Colour Range:	RGBWA + UV
Number of LEDs:	12
LED Type:	12 W 6in1 Colour
Refreh Rate	3000 Hz
Dispersion:	25°
DMX Input:	XLR 3-pin male
DMX Output:	XLR 3-pin female
DMX Mode:	2-channel, 3-channel 1, 3-channel 2, 6-channel, 9-channel
DMX Functions:	Colour Fade, Colour Jump, RGBWA+UV, Sound Control, Strobe
Standalone Modes:	Colour Jump, Colour Fade, Slave Mode, Sound Control, Static Colour, Colour Macro, Strobe
Controls:	Mode, Value Down, Value Up, Enter
Display:	Backlit LCD
Operating Voltage:	100V AC- 240V AC, 50 - 60 Hz
Power Consumption:	55W
Power Connector:	Neutrik PowerCon
Housing Material:	Metal
Housing Colour:	Black
Type of Cooling:	Fan
Fuse:	F2AL / 250V
Dimensions (without mounting bracket):	230 x 220 x 255 mm



STUDIO PAR 64 CAN Q 8W

18 X 8 W **QUAD COLOUR LED PAR CAN** RGBW
IN BLACK HOUSING

Extremely high-powered LED studio PAR in a black short housing. Ruggedly made housing in studio look with built-in filter frame holder. The Cameo® CLPST64Q8W has a total of 18 quad LEDs (RGBW), thus guaranteeing perfect mixing of solid and pastel colours – including white. With a power consumption of just 170 watts, the 8-Watt quad LEDs produce an impressive level of brightness with a beam angle of 25 degrees. It is operated using four buttons and an LED display on the back. The CLPST64Q8W is equipped with a super-quiet fan for cooling. There are three operating modes. In addition to DMX operation with 2, 3, 4 or 7-channels, this LED PAR can also be operated in standalone mode or via sound control. The CLPST64Q8W runs on mains voltages of 110 to 240 volts, so it can be used universally and worldwide.

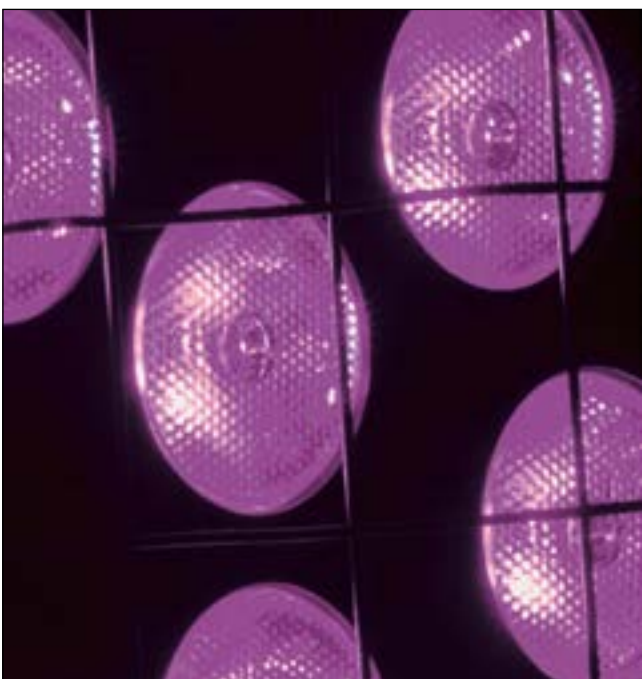
- ▶ 18 x 8 W Ultra High Power QUAD RGBW LEDs
- ▶ RGBW for perfect mixing of solid and pastel colours
- ▶ Operated via DMX, in master/slave mode or standalone mode
- ▶ Integrated microphone for sound control mode
- ▶ Simple to operate using the four buttons and LED display
- ▶ Double brackets included as standard
- ▶ Sturdy metal housing



WATCH THE DEMO-VIDEO:



Model Name:	CLPST64Q8W
Product Type:	LED Par Can
Type:	Studio PAR 64
Colour Range:	RGBW
Number of LEDs:	18
LED Type:	8 W QUAD Colour
Beam Angle:	25°
DMX Input:	XLR 3-pole male
DMX Output:	XLR 3-pole female
DMX Mode:	2/3/4/7-channel selectable
DMX Functions:	RGBW, Master Dimmer, Strobe, Sound Control, Colour Jump, Colour Fade
Standalone Modes:	Static Colour, Colour Fading, Colour Jump, Sound Control, Slave
Controls:	Enter, Mode, Value Up, Value Down
Indicators:	LED Display
Power Connector:	Power cord with Schuko connector (Type E / CEE 7/7)
Housing Material:	Metal
Housing Colour:	Black
Type of cooling:	Fan
Illuminance (lx @ 1m):	14 500 lx
Dimensions (without mounting bracket):	230 x 220 x 255 mm



STUDIO PAR 64 CAN RGB A Q 8W

18 X 8 W **QUAD COLOUR LED PAR CAN** RGB A
IN BLACK HOUSING

The Cameo® CLPST64RGBAQ8W is a professional Studio PAR 64 projector with a 25° dispersion angle in a classic black metal housing. 18 energyefficient high-performance 8 Watt Quad LEDs in the RGB A-system(RGB additive Colour System plus amber LEDs) for a natural colour mix with a high light output, the extremely high refresh rate of 5,000 Hz for flickerfree operation and therefore also ideal for TV-production.

- ▶ 18 x 8 W Ultra High Power QUAD RGB A LEDs
- ▶ RGB A for warmer richer colours
- ▶ Operation via DMX, in Master/Slave mode or as a single projector
- ▶ Built-in microphone for sound-control mode
- ▶ Simple to operate using the four buttons and LED display
- ▶ Double bracket included
- ▶ Sturdy metal housing



WATCH THE DEMO-VIDEO:



Model Name:	CLPST64RGBAQ8W
Product Type:	LED Par Can
Type:	Studio PAR 64
Colour Range:	RGB A
Number of LEDs:	18
LED Type:	8 W QUAD Colour
Beam Angle:	25°
DMX Input:	XLR 3-pole male
DMX Output:	XLR 3-pole female
DMX Mode:	2-channel, 3-channel 1, 3-channel 2, 4-channel, 7-channel
DMX Functions:	sound control, strobe, colour fade, colour jump, master dimmer, RGB A
Standalone Modes:	Colour Macro, colour jump, colour fade, slave mode, sound control, static colour
Controls:	Value Down, Enter, mode, Value Up
Indicators:	LED Display
Power Connector:	Power cord with Schuko connector (Type E / CEE 7/7)
Housing Material:	Metal
Housing Colour:	Black
Type of cooling:	Fan
Illuminance (lx @ 1m):	12000 (+/- 10%)
Dimensions (without mounting bracket):	230 x 220 x 255 mm



STUDIO PAR 64 CAN TRI 3W

18 X 3 W **TRI COLOUR LED PAR CAN** RGB
IN BLACK HOUSING

Professional Studio PAR with 18 ultra-bright 3-Watt TRI LEDs in a sturdy, black aluminium housing with a beam angle of 25 degrees. It is actuated either via the DMX protocol (3-pole XLR) with six control channels, in master/slave mode or standalone mode (sound control, colour change, solid colours). The CLPST64TRI3W is operated via four push buttons and an LED display. Its power consumption is a mere 60 Watts.

- ▶ 18 x 3 W High Power TRI RGB LEDs
- ▶ Low power consumption
- ▶ Operated via DMX, in master/slave mode or standalone mode
- ▶ Integrated microphone for sound control mode
- ▶ Simple to operate using the four buttons and LED display
- ▶ Sturdy metal housing



WATCH THE DEMO-VIDEO:



Model Name:	CLPST64TRI3W
Product Type:	LED Par Can
Type:	Studio PAR 64
Colour Range:	RGB
Number of LEDs:	18
LED Type:	3 W TRI Colour
Beam Angle:	25°
DMX Input:	XLR 3-pole
DMX Output:	XLR 3-pole
DMX Mode:	6-channel
DMX Functions:	RGB, Master Dimmer, Strobe, Sound Control, Colour Jump, Colour Fade
Standalone Modes:	Static Colour, Colour Change, Colour Fading, Sound Control, Slave
Controls:	Mode, Enter, Value Up, Value Down
Indicators:	LED Display
Power Connector:	Power cord with Schuko connector (Type E / CEE 7/7)
Housing Material:	Metal
Housing Colour:	Black
Type of cooling:	Fan
Illuminance (lx @ 1m):	7650 lx
Dimensions (without mounting bracket):	230 x 220 x 260 mm



STUDIO MINI PAR CAN Q 8W

7 X 8 W **QUAD COLOUR LED PAR CAN** RGBW
IN BLACK OR WHITE HOUSING

Extremely powerful studio mini PAR with seven 8-watt QUAD COLOUR LEDs for optimal colour mixing and perfect white light. This studio LED PAR has a beam angle of 25 degrees and is controlled via five DMX modes. An LED display on the back and four buttons ensure simple and practical operation. Alternatively, the studio mini PAR can also be operated in standalone mode with a built-in microphone and sound control. Sturdy black or white housing with double bracket for use as a floor PAR or on stands or traverses. Maximum power consumption 60 watts.

- ▶ 7 x 8 W Ultra High Power QUAD RGBW LEDs
- ▶ RGBW for perfect mixing of solid and pastel colours
- ▶ Operated via DMX, in master/slave mode or standalone mode
- ▶ Integrated microphone for sound control mode
- ▶ Simple to operate using the four buttons and LED display
- ▶ Double brackets included as standard
- ▶ Compact, sturdy metal housing



WATCH THE DEMO-VIDEO:



Model Name:	CLPSTMINIQ8W (black housing) / CLPSTMINIQ8WWH (white housing)
Product Type:	LED Par Can
Type:	Studio Mini PAR
Colour Range:	RGBW
Number of LEDs:	7
LED Type:	8 W QUAD Colour
Refresh Rate:	5000 Hz
Beam Angle:	25°
DMX Input:	XLR 3-pole male
DMX Output:	XLR 3-pole female
DMX Mode:	2-channel, 3-channel 1, 3-channel 2, 4-channel, 7-channel
DMX Functions:	RGBW, Master Dimmer, Strobe, Colour Jump, Colour Fade
Standalone Modes:	Static Colour, Colour Change, Colour Fading, Sound Control, Slave
Controls:	Mode, Enter, Value Up, Value Down
Indicators:	LED Display
Power Connector:	Power cord with Schuko connector (Type E / CEE 7/7)
Housing Material:	Aluminium
Housing Colour:	Black / White
Type of cooling:	Fan
Illuminance (lx @ 1m):	6640 lx
Dimensions (without mounting bracket):	168 x 183 x 186 mm



IR-Remote included

- ▶ 7 x 4 W High Power Cold White/Warm White LEDs
- ▶ 17 presets for different colour temperatures
- ▶ IR-Remote included
- ▶ Operated via DMX, in master/slave mode or standalone mode
- ▶ Integrated microphone for sound control mode
- ▶ Simple to operate using the four buttons and LED display
- ▶ Double brackets included as standard
- ▶ Compact, sturdy metal housing



WATCH THE DEMO-VIDEO:

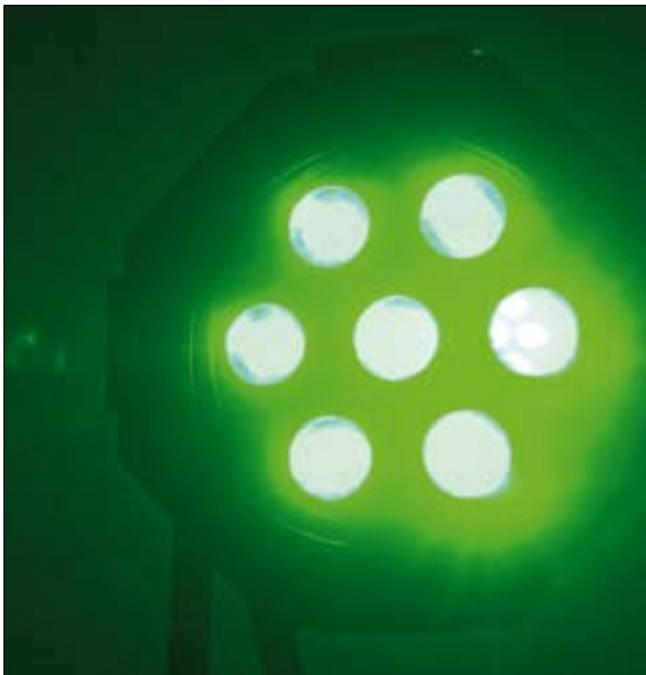


STUDIO MINI PAR CAN Q 4W W

7 X 4 W **COLD WHITE / WARM WHITE LED PAR CAN**
IN BLACK OR WHITE HOUSING

The Cameo® CLPSTMINIQ4WW is a compact all-white studio PAR light. Featuring 7 powerful 4-watt 2-in-1 LEDs, the miniature fixture creates varying degrees of colour temperature and brightness from warm to cold white with a focused 35° coverage. The CLPSTMINIQ4WW allows for 2, 5 and 6-channel DMX modes and master, slave and standalone operation with a variety of functions, 17 temperature presets and infrared remote control capability. Mode, Enter, Value Up and Down keys and the clear LED display provide easy menu access. Available in black and white, the CLPSTMINIQ4WW incorporates adjustable twin brackets for truss, floor and other mounting options.

Model Name:	CLPSTMINIQ4WW (black housing) / CLPSTMINIQ4WWHH (white housing)
Product Type:	LED Par Can
Type:	Studio Mini PAR
Colour Range:	Cold White / Warm White
Number of LEDs:	7
LED Type:	4 W 2 in 1 LED
Beam Angle:	35°
DMX Input:	XLR 3-pole
DMX Output:	XLR 3-pole
DMX Mode:	2-channel, 5-channel, 6-channel
DMX Functions:	Master Dimmer, Cool White, Warm White, Strobe, Colour Temperature
Standalone Modes:	Slave, Static Colour Mode, Colour Temperature (17 Presets)
Controls:	Mode, Enter, Value Up, Value Down
Indicators:	LED Display
Power Connector:	Power cord with Schuko connector (Type E / CEE 7/7)
Housing Material:	Metal
Housing Colour:	Black / White
Type of cooling:	Fan
Illuminance (lx @ 1m):	5000 lx
Colour Temperature:	3200 K - 6500 K
Remote	IR Remote
Dimensions (without mounting bracket):	168 x 186 x 186 mm



STUDIO MINI PAR CAN TRI 3W
7 X 3 W **TRI COLOUR LED PAR CAN** RGB IN BLACK
OR WHITE HOUSING

Professional Mini-PAR in sturdy and compact black or white housing. The light is provided by seven ultra-bright 3-Watt TRI colour LEDS, and the beam angle is 25 degrees. Thanks to the colour mix in the LED itself, colours are added without coloured shadows or borders. The power consumption of the CLPSTMINITRI3W/WWH is a mere 30 Watts. The sturdy, compact housing features a double bracket for mounting to cross-beams and bars and for use as a floor PAR. It is actuated via DMX (6 channel) or in standalone mode. The CLPSTMINITRI3W/WWH has an integrated microphone for sound control.

- ▶ 7 x 3 W High Power TRI RGB LEDs
- ▶ Low power consumption
- ▶ Operated via DMX, in master/slave mode or standalone mode
- ▶ Integrated microphone for sound control mode
- ▶ Simple to operate using the four buttons and LED display
- ▶ Double brackets included as standard
- ▶ Compact, sturdy metal housing



WATCH THE DEMO-VIDEO:



Model Name:	CLPSTMINITRI3W (black housing) / CLPSTMINITRI3WWH (white housing)
Product Type:	LED Par Can
Type:	Studio Mini PAR
Colour Range:	RGB
Number of LEDs:	7
LED Type:	3 W TRI Colour
Beam Angle:	25°
DMX Input:	XLR 3-pole
DMX Output:	XLR 3-pole
DMX Mode:	6-channel
DMX Functions:	RGB, Master Dimmer, Strobe, Colour Jump, Colour Fade
Standalone Modes:	Static Colour, Colour Change, Colour Fading, Sound Control, Slave
Controls:	Mode, Enter, Value Up, Value Down
Indicators:	LED Display
Power Connector:	Power cord with Schuko connector (Type E / CEE 7/7)
Housing Material:	Metal
Housing Colour:	Black / White
Type of cooling:	Convection
Illuminance (lx @ 1m):	4070 lx
Dimensions (without mounting bracket):	168 x 183 x 186 mm



STUDIO MINI PAR CAN COB 30W

30 W **COB LED PAR CAN** RGB IN BLACK
OR WHITE HOUSING

The Cameo® CLPSTMINICOB30W is a compact studio PAR light using the RGB additive system. With innovative chip-on-board technology and powered by a single 30 W COB LED, the miniature fixture creates rich, natural colours and pastel hues alike with uniform coverage and a 55° beam angle. The CLPSTMINICOB30W provides DMX control in 2-channel, 3-channel 1, 3-channel 2 and 6-channel modes and a variety of functions including strobe effects. It is capable of master, slave and standalone operation and features a built-in microphone for sound activation. Mode, Enter, Value Up and Down keys and the clear LED display allow for easy menu access. The CLPSTMINICOB30W is available in black and white with easily adjustable twin brackets providing truss, floor and other mounting options.

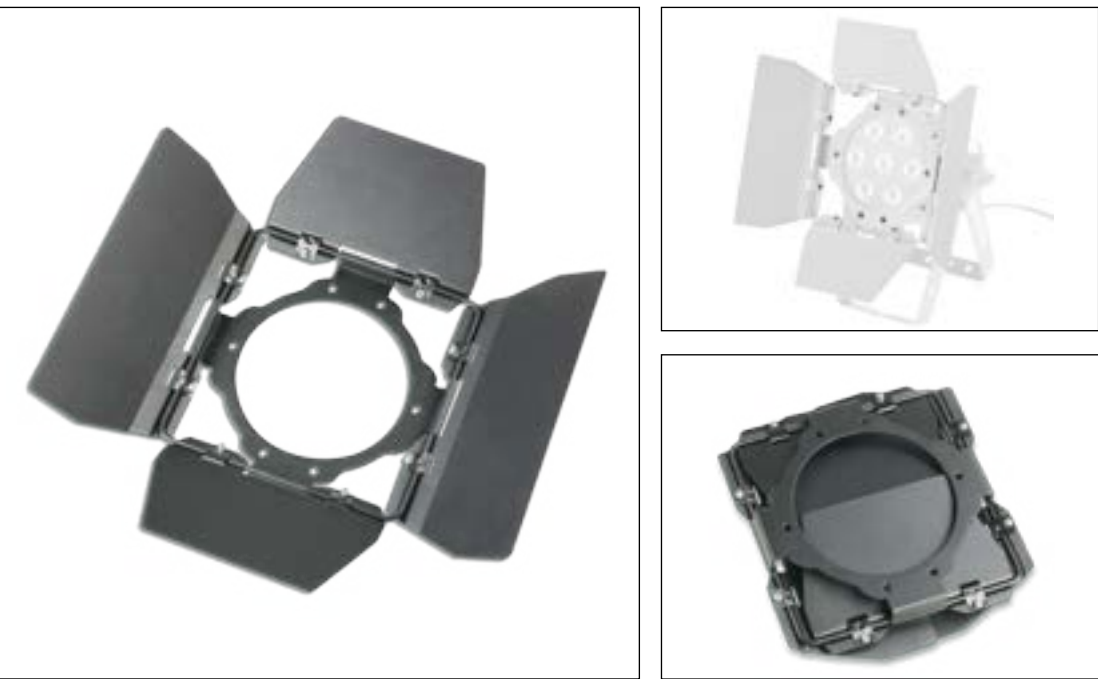
- ▶ Powerful and innovative 30 W RGB COB LED
- ▶ For rich, natural colours and illumination uniformity
- ▶ Wide beam angle
- ▶ Operated via DMX, in master/slave mode or standalone mode
- ▶ Integrated microphone for sound control mode
- ▶ Simple to operate using the four buttons and LED display
- ▶ Double brackets included as standard
- ▶ Compact, sturdy metal housing



WATCH THE DEMO-VIDEO:



Model Name:	CLPSTMINICOB30W (black housing) / CLPSTMINICOB30WWH (white housing)
Product Type:	LED Par Can
Type:	Studio Mini PAR
Colour Range:	RGB
Number of LEDs:	1
LED Type:	30W COB
Beam Angle:	55°
DMX Input:	XLR 3-pole
DMX Output:	XLR 3-pole
DMX Mode:	2-channel, 3-channel 1, 3-channel 2, 6-channel
DMX Functions:	RGB, Master Dimmer, Strobe, Colour Jump, Colour Fade
Standalone Modes:	Static Colour, Colour Change, Colour Fading, Sound Control, Slave
Controls:	Mode, Enter, Value Up, Value Down
Indicators:	LED Display
Power Connector:	Power cord with Schuko connector (Type E / CEE 7/7)
Housing Material:	Metal
Housing Colour:	Black / White
Type of cooling:	Convection
Dimensions (without mounting bracket):	168 x 183 x 186 mm

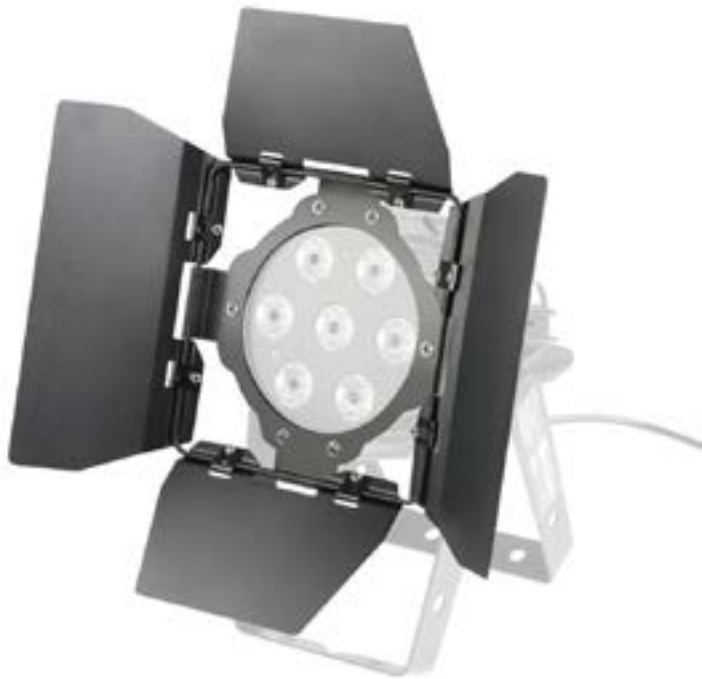


STUDIO PAR BARN DOOR 1

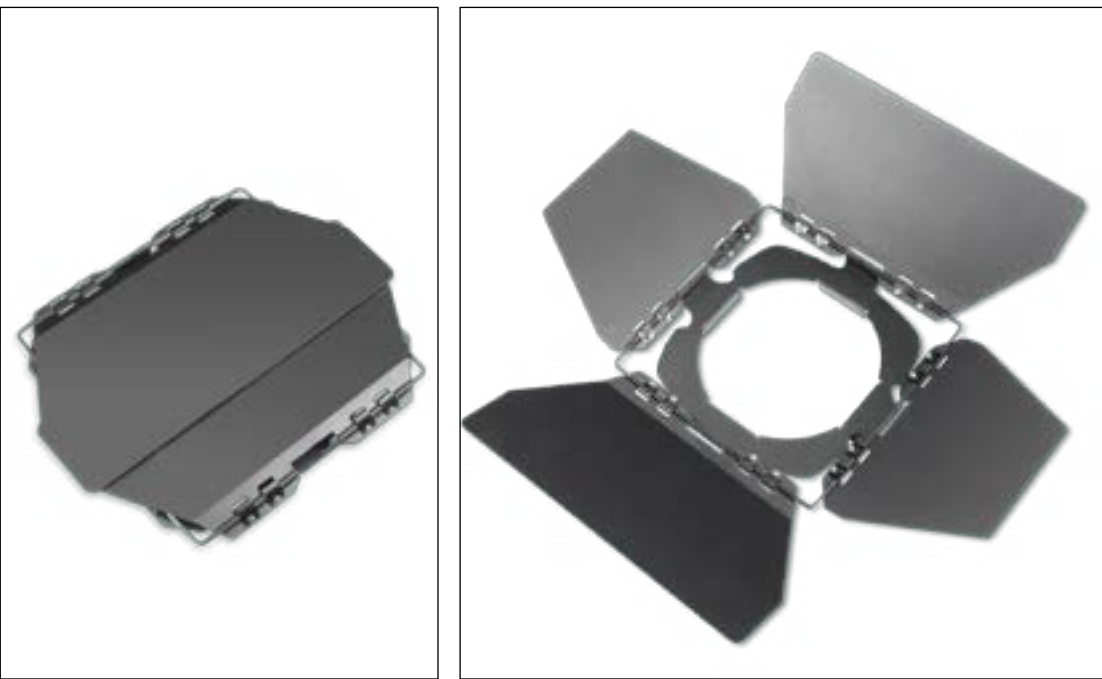
BARN DOORS FOR STUDIO MINI PAR
IN BLACK OR WHITE

Barn doors for Studio Mini Par with
4 adjustable leaves

suitable for
CLPSTMINICOB30W/WH
CLPSTMINIQ4WW/WH
CLPSTMINIQ8W/WH
CLPSTMINITRI3W/WH
CLPSTMINICOB30W/WH



Model Name:	CLPSTBARND00R1B (black housing) / CLPSTBARND00R1WH (white housing)
Product Type:	BARN DOORS
Material:	Metal
Colour:	Black / White



STUDIO PAR BARN DOOR 2

BARN DOORS FOR STUDIO PAR
IN BLACK

Barn doors for Studio Par with
4 adjustable leaves

suitable for
CLPST64Q8W
CLPST64RGBQ8W
CLPST64TRI3W



Model Name:	CLPSTBARND00R2B
Product Type:	BARN DOORS
Material:	Metal
Colour:	Black



CLPFLATPRO18IP65

CLPFLATPRO12IP65

CLPFLATPRO7IP65

- ▶ High performance with ultra bright 10W LEDs
- ▶ Super silent due to convection cooling
- ▶ RGBWA colour spectrum for more flexible colour mixing reaching from warm, rich to solid and pastel colors.
- ▶ Flicker Free
- ▶ IP65 for outdoor use
- ▶ Rugged flat and compact metal housing



WATCH THE DEMO-VIDEO:



FLAT PRO SERIES OUTDOOR 10 W **LED PAR CAN** RGBWA IN BLACK HOUSING

With their IP65 rating the Cameo® FLAT PRO SERIES professional outdoor PAR lights support stunning, highly creative lighting in the open. High performance ultra bright 10 watt RGBWA LEDs produce a huge range of colours from soft pastel hues to rich, warm tints with a 30° beam angle. In addition, the FLAT PRO outdoor lights' 3.000 Hz refresh rate eliminates flicker.

The CLPFLATPRO7IP65, CLPFLATPRO12IP65 and CLPFLATPRO18IP65's die-cast enclosures are rated IP65 according to EN 60529 and totally protected against dust and low pressure water jets from all directions

Model Name:	CLPFLATPRO18IP65 / CLPFLATPRO12IP65 / CLPFLATPRO7IP65
Product Type:	LED Par Can
Type:	Flat PAR
Colour Range:	RGBWA
Number of LEDs:	18/12/7
LED Type:	10W
Beam Angle:	30°
DMX Input:	XLR 3-pole, XLR 5-pole
DMX Output:	XLR 3-pole, XLR 5-pole
DMX Mode:	2-channel, 3-channel-1, 3-channel-2, 5-channel, 8-channel
DMX Functions:	Colour Jump, Colour Fade, Strobe, Master Dimmer, RGBWA
Standalone Modes:	Colour Jump, Colour Fade, Static Colour, Slave Mode, Colour Macro
Controls:	Mode, Enter, Value Up, Value Down
Indicators:	LED Display
Power Connector:	3-pin special screw connector
Housing Material:	Metal
Housing Colour:	Black
IP Class:	65
Type of cooling:	Convection
Illuminance (lx @ 1m):	23000 lx / 15000 lx / 10000 lx
Dimensions (without mounting bracket):	280 x 280 x 160 mm / 230 x 230 x 160 mm / 180 x 180 x 160 mm



OUTDOOR PAR TRI 12 IP 65
12 X 3 W TRI COLOUR LED OUTDOOR PAR CAN
RGB IN BLACK HOUSING

The Cameo® CLPSTTRI12IP is a heavy-duty PAR light with twelve 3-watt tri-colour LEDs for smooth RGB colour mixing and a focused 25° beam angle. It is especially intended for professional outdoor applications featuring purpose-designed screw connectors and an IP65 rating. The CLPSTTRI12IP can be controlled via DMX and provides a variety of colour macro, jump, fade and strobe functions. It is also capable of slave and standalone operation with Mode, Enter, Value Up and Down keys and a clear LED display permitting easy menu access. The Cameo® CLPSTTRI12IP is equipped with dual brackets that are easily adjustable for multiple mounting options.

- ▶ 12 x 3 W High Power TRI RGB LEDs
- ▶ IP65 for outdoor use
- ▶ Operated via DMX, in master/slave mode or standalone mode
- ▶ Simple to operate using the four buttons and LED display
- ▶ Double brackets included as standard
- ▶ Rugged compact metal housing



WATCH THE DEMO-VIDEO:



Model Name:	CLPSTTRI12IP
Product Type:	LED Par Can
Type:	Outdoor PAR
Colour Range:	RGB
Number of LEDs:	12
LED Type:	3 W TRI Colour
Beam Angle:	25°
DMX Input:	3-pin special connector, screwable
DMX Output:	3-pin special connector, screwable
DMX Mode:	2-channel, 3-channel 1, 3-channel 2, 6-channel
DMX Functions:	RGB, Master Dimmer, Strobe, Colour Macro, Colour Jump, Colour Fade
Standalone Modes:	Static Colour, Colour Change, Colour Fading, Slave
Controls:	Mode, Enter, Value Up, Value Down
Indicators:	LED Display
Power Connector:	3-pin special connector, screwable
Housing Material:	Metal
IP Class:	65
Illuminance (lx @ 1m):	5900 lx
Dimensions (without mounting bracket):	203 x 203 x 193 mm



POWER EXTENSION CABLE IP65

IP65

Model Name:	CLPEX001
Product Type:	Extension Cable
Type:	Power Cord
Protection class IP:	65
Length:	1 m

Model Name:	CLPEX005
Product Type:	Extension Cable
Type:	Power Cord
Protection class IP:	65
Length:	5 m

Model Name:	CLPEX010
Product Type:	Extension Cable
Type:	Power Cord
Protection class IP:	65
Length:	10 m



DMX EXTENSION CABLE IP65

IP65

Model Name:	CLDMXEX001
Product Type:	Extension Cable
Type:	DMX Cable
Protection class IP:	65
Length:	1 m

Model Name:	CLDMXEX005
Product Type:	Extension Cable
Type:	DMX Cable
Protection class IP:	65
Length:	5 m

Model Name:	CLDMXEX010
Product Type:	Extension Cable
Type:	DMX Cable
Protection class IP:	65
Length:	10 m

Model Name:	CLDMXEX020
Product Type:	Extension Cable
Type:	DMX Cable
Protection class IP:	65
Length:	20 m



MULTI PAR 3

COMPACT 28 X 8 W QUAD COLOUR LED LIGHTING SET INCL. TRANSPORT CASE

The Cameo® CLMPAR3 is an especially compact and flexible lighting system for professional requirements with maximum brightness and perfect RGBW colour mixing. The four flat PAR floodlights, each with seven ultrabright 8 W quad LEDs and 25° beam angle, are convection cooled and mounted on a bar with integral controls and all connectors so that they are individually aimable. Neutrik Powercon sockets are used for power supply and passing on incoming power; external components can be powered via two Schuko sockets that are switchable by remote control. The lighting system is controlled via DMX, the included IR remote control, an optional foot pedal or the clearly arranged, illuminated LC display with four function keys.

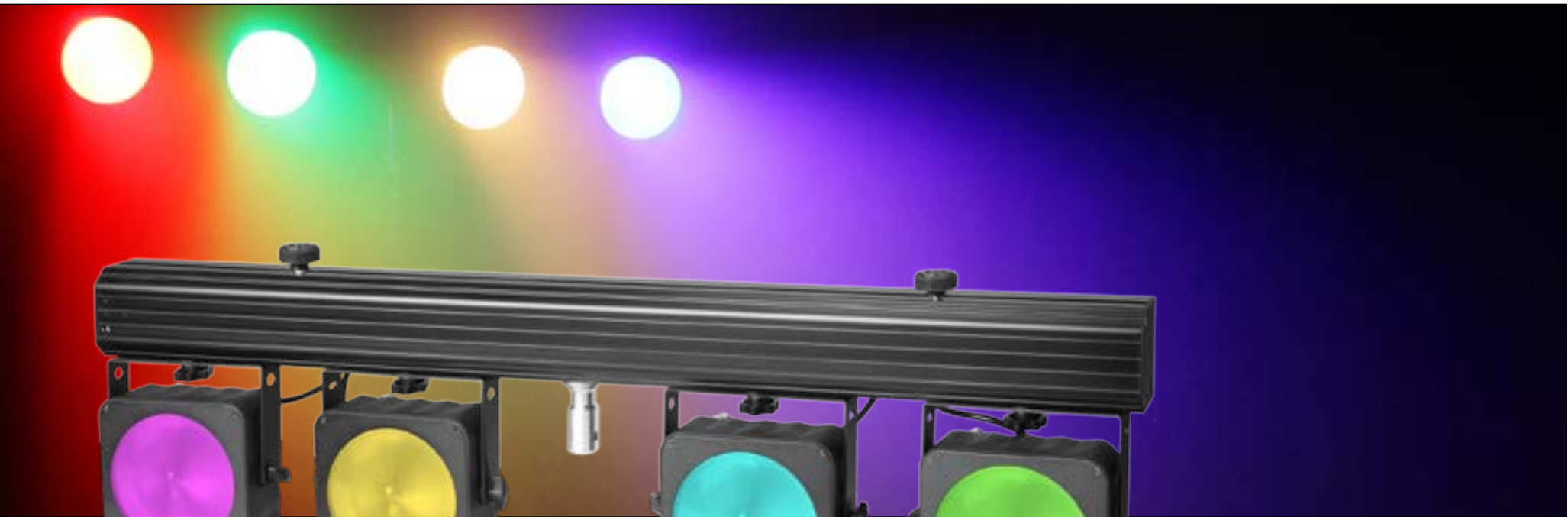
Model Name:	CLMPAR3
Product Type:	Compact LED Lighting Set
Type:	4 Flat Can Bar
Colour Range:	RGBW
Number of LEDs:	4 x 7
LED Type:	8 W QUAD Colour
Beam Angle:	25°
DMX Input:	XLR 3-pole
DMX Output:	XLR 3-pole
DMX Mode:	4-channel 1, 4-channel 2, 6-channel, 8-channel, 9-channel, 16-channel, 21-channel selectable
DMX Functions:	RGBW, Master Dimmer, Strobe, Sound Control, Program Mode, switchable power sockets 1/2
Standalone Modes:	Program Mode (Static Colour, Colour Change, Colour Fading,...), Sound Mode, Slave, Auto Run, Dimmer Mode
Standalone Features:	Flow Invert, Dimmer Curve, Master Dimmer
Remote Connector:	XLR-5 pole female
Controls:	Mode, Enter, Value Up, Value Down
Wireless Remote Control:	IR
Indicators:	2 x 16 Digit LC-Display
Power Supply	90 V AC - 250 V AC
Power Consumption	210 W
Power Connector:	Neutrik Powercon In/Out
Switchable Power Out:	2 x Schuko
Housing Material:	Metal
Housing Colour:	Black
Dimensions:	1030 x 290 x 100 mm

- ▶ 4 x 7 ultra-bright 8 W QUAD RGBW LEDs
- ▶ RGBW for perfect mixing of solid and pastel colours
- ▶ Professional 28-mm TV adapter for mounting
- ▶ Optional footswitch for easy on stage controlling
- ▶ IR-Remote included
- ▶ Operated via DMX, in master/slave mode or standalone mode
- ▶ Integrated microphone for sound control
- ▶ Simple to operate using the four buttons and LC-Display
- ▶ Heavy duty aluminium housing
- ▶ Practical transport case included as standard



WATCH THE DEMO-VIDEO:





- ▶ 4 x 30W ultra-bright RGB LEDs
- ▶ COB Technology for smooth colour mixing
- ▶ Professional 28-mm TV adapter for mounting
- ▶ New designed optional footswitch for easy on stage controlling
- ▶ IR-Remote included
- ▶ Operated via DMX, in master/slave mode, standalone mode or via IR-Remote
- ▶ Integrated microphone for sound control
- ▶ Simple to operate using the four buttons and LC-Display
- ▶ Heavy duty aluminium housing
- ▶ Practical transport case included
- ▶ Installation points and switchable power plugs for 2 additional lights



WATCH THE DEMO-VIDEO:



Also available:
Set with lighting stand
+ 4 pedal foot switch

CLMPARCOB1SET2



MULTI PAR COB1

COMPACT 4X30 W RGB COB LED LIGHTING SET INCL. TRANSPORT CASE

The Cameo® CLMPARCOB1 is a compact and lightweight professional lighting system using modern chip-on-board LED technology, which is extremely durable and very energy efficient. The four flat PAR spot-lights with a 50° beam angle are ultra bright 30 W COB LEDs designed for intensive RGB colour mixing and both horizontal and vertical alignment.

Model Name:	CLMPARCOB1
Product Type:	LED lighting system
Type:	Multi PAR system
Colour Range:	RGB
Number of LEDs:	4 x 1
LED Type:	30 W COB
beam angle:	50°
DMX Input:	XLR 3-pin male
DMX Output:	XLR 3-pin female
DMX Mode:	6-channel, 8-channel, 4-channel, 17-channel, 3-channel, 7-channel, 12-channel, 5-channel
DMX Functions:	RGB, master dimmer, 13 Programs, strobe, sound control, switchable power sockets 1/2
Standalone Modes:	strobe, 13 Programs, sound control, Auto run, slave mode, static colour
Standalone Features:	Flow Invert, Dimmer Curve, Master Dimmer
Controls:	IR Remote, Value Up, Value Down, mode, Enter
Remote connection:	XLR 5-pin female
Display:	multifunction LC-Display
Power Supply	90 V AC - 250 V AC, 50 - 60 Hz
Power Consumption	55 W
Power Connector:	Neutrik PowerCon
Housing Material:	Metal
Housing Colour:	Black
TV spigot:	28 mm
Dimensions:	1005 x 285 x 80 mm
Accessorie (included):	Power Cord 3 m
Other features:	Installation points for 2 additional lights, Neutrik PowerCon output, IR Remote



- ▶ 4 x 7 ultra-bright 3W TRI RGB LEDs
- ▶ Professional 28-mm TV spigot for mounting
- ▶ Optional footswitch for easy on stage controlling
- ▶ Operated via DMX, in master/slave mode or standalone mode
- ▶ Integrated microphone for sound control
- ▶ Simple to operate using the four buttons and LC-Display
- ▶ Sturdy metal housing
- ▶ Practical transport case included as standard



WATCH THE DEMO-VIDEO:



MULTI PAR 2

COMPACT 28 X 3 W TRI COLOUR LED LIGHTING SET INCL. TRANSPORT CASE

The four compact flat cans mounted on a bar with integrated control make the CLMPAR2 the ideal basic kit for stage lighting. A total of 28 ultra-bright 3-Watt TRI colour LEDs create awe-inspiring brightness and a perfect colour mix. The CLMPAR2 is equipped with 3-pole inputs and outputs to enable actuation via DMX with 6, 9 or 15 channels. Alternatively, the CLMPAR2 can be actuated with an optional controller, which is connected via the corresponding five-pole cable. The four sturdy foot switches allow access to all of the show's key parameters. Of course, the CLMPAR2 also works in standalone mode, with a microphone for sound control integrated into aThe CLMPAR2 is powered via a removable Schuko cable and is equipped with a 28-mm TV adapter for tripod-mounting. The practical transport case is included as standard.

Model Name:	CLMPAR2
Product Type:	Compact LED Lighting Set
Type:	4 Flat Can Bar
Colour Range:	RGB
Number of LEDs:	4 x 7
LED Type:	3W TRI Colour
Beam Angle:	25°
DMX Input:	XLR 3-pole
DMX Output:	XLR 3-pole
DMX Mode:	6/9/15-channel selectable
DMX Functions:	RGB, Master Dimmer, Strobe, Sound Control, Colour Jump, Colour Fade
Standalone Modes:	Static Colour, Colour Change, Colour Fading, Sound Control, Slave, Auto Mode
Remote Connector:	XLR-5 pole female
Controls:	Mode, Enter, Value Up, Value Down
Indicators:	LC-Display
Power Supply	100V AC - 250 V AC
Power Consumption	100W
Power Connector:	IECC Euro Power Socket male, IECC Euro Power Socket female
Housing Material:	Metal
Housing Colour:	Black
TV-Spigot:	28 mm
Dimensions:	1030 x 290 x 100 mm



- ▶ 4 x 108 powerful, long-life 10 mm RGB LEDs
- ▶ Professional 28-mm TV spigot for mounting
- ▶ Optional footswitch for easy on stage controlling
- ▶ Operated via DMX, in master/slave mode or standalone mode
- ▶ Integrated microphone for sound control
- ▶ Simple to operate using the four buttons and LC-Display
- ▶ Sturdy metal housing
- ▶ Practical transport case included as standard



WATCH THE DEMO-VIDEO:



MULTI PAR 1

COMPACT 432 X 10 MM LED LIGHTING SET INCL. TRANSPORT CASE

The four compact flat cans mounted on a bar with integrated control make the CLMPAR1 the ideal basic kit for stage lighting. Each of the four flat cans is fitted with 108 ultra-bright 10-mm LEDs, creating awe-inspiring brightness and the perfect colour mix. The CLMPAR1 is equipped with 3-pole inputs and outputs to enable actuation via DMX with 6, 9 or 15 channels. Alternatively, the CLMPAR 1 can be actuated by an optional controller. Of course, the CLMPAR1 also works in standalone mode, with a microphone for sound control integrated into the bar. A 4-way foot controller is available as an optional extra. The CLMPAR1 is powered via a removable Schuko cable and is equipped with a 28-mm TV adapter for tripod-mounting. The practical transport case is included as standard.

Model Name:	CLMPAR1
Product Type:	Compact LED Lighting Set
Type:	4 Flat Can Bar
Colour Range:	RGB
Number of LEDs:	4 x 108
LED Type:	10 mm
Beam Angle:	25°
DMX Input:	XLR 3-pole
DMX Output:	XLR 3-pole
DMX Mode:	6/9/15-channel selectable
DMX Functions:	RGB, Master Dimmer, Strobe, Sound Control, Colour Jump, Colour Fade
Standalone Modes:	Static Colour, Colour Change, Colour Fading, Sound Control, Slave, Auto Mode
Remote Connector:	XLR-5 pole female
Controls:	Mode, Enter, Value Up, Value Down
Indicators:	LC-Display
Power Supply	100 V AC - 250 V AC
Power Consumption	50 W
Power Connector:	IECC Euro Power Socket male, IECC Euro Power Socket female
Housing Material:	Metal
Housing Colour:	Black
TV-Spigot:	28 mm
Dimensions:	1030 x 290 x 100 mm



LED BAR



LED BAR

252 X 10 MM **LED RGBA COLOUR BAR** IN BLACK OR WHITE HOUSING

The Cameo® CLBARL10RGBA/WH is a slim, versatile light bar: it can be used in clubs and discos, stage design and interior decorating, even in residential spaces. It has 252 powerful, long-life 10mm LEDs in the colours red, green, blue, and amber which ensure brilliant, even lighting with the basic colours and any desired mixed colours with a defined beam angle of 30°. The bar can be locked in position using the two mounting brackets and has two eyebolts for mounting and securing. In- and output power and DMX connectors on both ends make it possible to control multiple Cameo® light bars in series. Moreover, it impresses with a low power consumption of 40W and minimal generation of heat.

- ▶ 252 powerful, long-life 10 mm RGBA LEDs
- ▶ RGBA for warm, rich colour mixing
- ▶ Operated via DMX, in master/slave mode or standalone mode
- ▶ Can be operated in one block or separately in 4 equal blocks
- ▶ Integrated microphone for sound control
- ▶ Simple to operate using the four buttons and LED display
- ▶ Universal mounting brackets included
- ▶ Rugged slim metal housing



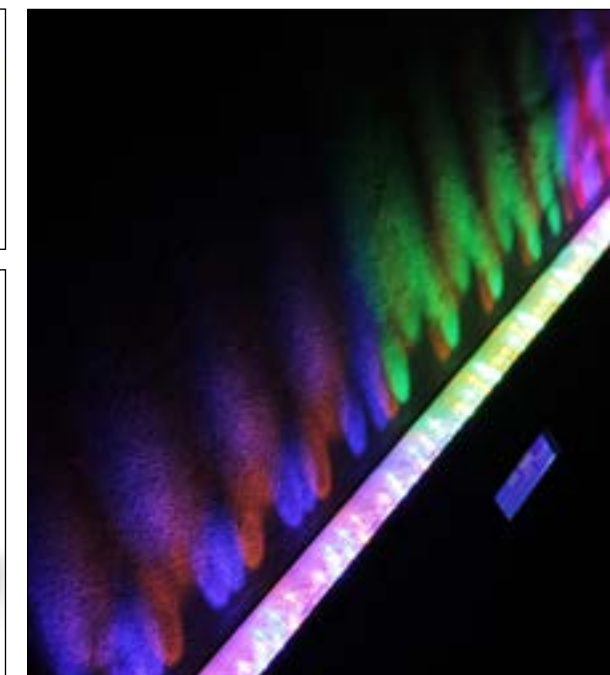
WATCH THE DEMO-VIDEO:



Model Name:	CLBARL10RGBA (black housing) / CLBARL10RGBAWH (white housing)
Product Type:	Light bar
Type:	Washer
Colour Range:	RGBA
Number of LEDs:	252
LED Type:	10 mm
Beam Angle:	30°
DMX Input:	XLR 3-pin male
DMX Output:	XLR 3-pin female
DMX Mode:	4-channel, 2-channel, 19-channel, 3-channel, 6-channel
DMX Functions:	Master Dimmer, Colour Macro, Colour Jump, Colour Fade, Strobe, Sound Control, RGBA
Standalone Modes:	Static Colour, Auto Run, Sound Control, Slave Mode, Colour Jump, 10 Programs, Colour Fade
Controls:	Mode, Enter, Value Up, Value Down
Indicators:	LC Display
Power Supply:	100 V AC - 250 V AC
Power Consumption:	40W
Power Connector:	IEC power connector
Housing Material:	Metal
Housing Colour:	White
Dimensions (without mounting bracket):	1018 x 63 x 87 mm



LED BAR



LED BAR IR

252 X 10 MM **LED RGB COLOUR BAR** IN BLACK OR WHITE HOUSING WITH IR REMOTE CONTROL

The Cameo® CLBARL10RGBIR is a super slim washer with RGB colour mixing, a 30° beam angle and comfortable IR remote control. With a total of 252 long-lasting and energy-efficient 10 mm LEDs the ultra bright light bar with a robust metal housing provides effective, rich colour wallpapers in bars, discos and on the stage. The CLBARL10RGBIR can be operated via 5 DMX modes, as master, slave and standalone or in one block or separately in 3 equal blocks. 12 programs and the built-in microphone for music control ensure functionality, the manual setting is very easily done on a bright LED display using 4 buttons. With 3-pin XLR-connectors for input and loop-through of the DMX-signal, as well as IEC-sockets for the power supply and output the Cameo® CLBARL10RGBIR is equipped for serial connection. Universal mounting brackets offer extensive possibilities for mounting and alignment. Also available in white (CLBARL10RGBIRWH), IR remote control is included.

- ▶ 252 luminous, long-lasting 10 mm RGB LEDs
- ▶ RGB for warmer, richer colours
- ▶ Operating in one block or separately in 3 equal blocks
- ▶ Supplied with IR remote control
- ▶ Operation via DMX, in Master/Slave mode or as a single projector
- ▶ Built-in microphone for sound-control mode
- ▶ Simple to operate using the four buttons and LED display
- ▶ Rugged metal housing with universal mounting brackets
- ▶ Power input and output jacks for serial connection



WATCH THE DEMO-VIDEO:



Model Name:	CLBARL10RGBIR (black housing), CLBARL10RGBIRWH (white housing),
Product Type:	Light Bar
Type:	Washer
Colour Range:	RGB
Number of LEDs:	252
LED Type:	10 mm
Dispersion:	30°
DMX Input:	XLR 3-pin male
DMX Output:	XLR 3-pin female
DMX Mode:	2-channel, 3-channel 1, 3-channel 2, 9-channel, 12-channel
DMX Functions:	Program, RGB, Sound Control, Colour Macro, Strobe
Standalone Modes:	Sound Control, 12 Programs, Colour Macro, Auto Run, Slave Mode
Controls:	Mode, Enter, Value Up, Value Down, IR-Remote
Indicators:	LED Display
Power Supply:	100 V AC - 240 V AC, 50 - 60 Hz
Power Consumption:	40W
Power Connector:	IEC Power Connector Female, IEC Power Connector Male
Housing Material:	Metal
Housing Colour:	Black, White
Dimensions (without mounting bracket):	1018 x 63 x 87 mm



STROBE 2
EXTREMELY POWERFUL STROBE WITH
6 X 10W WHITE COB LEDS

The Cameo® CLSTROBE2 is a high-power LED strobe light with six 10-Watt white COB LEDs and 80° beam angle for large area coverage. It allows for DMX, slave and standalone operation with strobe, dimmer and sound activation modes. The flash rate is adjustable from 1 to 20 flashes per second for an intense strobe effect. Mode, Value Up and Down keys and a 3-digit LED display permit easy manual control. The compact lightweight CLSTROBE2 is easily portable, and an adjustable bracket provides multiple mounting options.

- ▶ Extremely Powerful 6 x 10W White COB LEDs
- ▶ Low power consumption
- ▶ Flash-rate adjustable (1-20 flashes/sec)
- ▶ Wide beam angle
- ▶ Operated via DMX, in master/slave mode or standalone mode
- ▶ Integrated microphone for sound control
- ▶ Simple to operate using the three buttons and LED display
- ▶ Universal mounting bracket included
- ▶ Compact, sturdy metal housing



WATCH THE DEMO-VIDEO:



Model Name:	CLSTROBE2
Product Type:	Strobe
Type:	LED Strobe
Colour Range:	White
Number of LEDs:	6
LED Type:	10W White COB
Beam Angle:	80°
Flash Rate:	1-20 flashes/sec adjustable
DMX Input:	XLR 3-pole
DMX Output:	XLR 3-pole
DMX Mode:	2-channel
DMX Functions:	Flash Rate, Dimmer
Standalone Modes:	Flash Rate, Dimmer, Sound Mode, Slave
Controls:	Mode, Value Up, Value Down
Indicators:	3 Digit LED Display
Connectors:	Analog on- and output 6.3 mm jack
Power Connector:	Power cord with Schuko connector (Type E / CEE 7/7)
Housing Material:	Metal
Housing Colour:	Black
Dimensions (without mounting bracket):	380 x 95 x 165 mm



STROBE 1
HIGH QUALITY STROBE WITH 3 X 3.5W WHITE COB LEDs

The Cameo® CLSTROBE1 is a high-quality LED strobe light with three 3.5-Watt white COB LEDs and 80° beam angle for large area coverage. It allows for DMX, slave and standalone operation with strobe, dimmer and sound activation modes. The flash rate is adjustable from 1 to 20 flashes per second for an intense strobe effect. Mode, Value Up and Down keys and a 3-digit LED display permit easy manual control. The compact lightweight CLSTROBE1 is easily portable, and an adjustable bracket provides multiple mounting options.

- ▶ Powerful 3 x 3,5W White COB LEDs
- ▶ Low power consumption
- ▶ Flash-rate adjustable (1-20 flashes/sec)
- ▶ Wide beam angle
- ▶ Operated via DMX, in master/slave mode or standalone mode
- ▶ Integrated microphone for sound control
- ▶ Simple to operate using the three buttons and LED display
- ▶ Universal mounting bracket included
- ▶ Compact, sturdy metal housing



WATCH THE DEMO-VIDEO:



Model Name:	CLSTROBE1
Product Type:	Strobe
Type:	LED Strobe
Colour Range:	White
Number of LEDs:	3
LED Type:	3.5W White COB
Beam Angle:	80°
Flash Rate:	1-20 flashes/sec adjustable
DMX Input:	XLR 3-pole
DMX Output:	XLR 3-pole
DMX Mode:	2-channel
DMX Functions:	Flash Rate, Dimmer
Standalone Modes:	Flash Rate, Dimmer, Sound Mode, Slave
Controls:	Mode, Value Up, Value Down
Indicators:	3 Digit LED Display
Connectors:	Analog on- and output 6.3 mm jack
Power Connector:	Power cord with Schuko connector (Type E / CEE 7/7)
Housing Material:	Metal
Housing Colour:	Black
Dimensions (without mounting bracket):	380 x 95 x 165 mm



STORM

5X3W 3IN1 RGBWA **DERBY STROBE AND GRATING LASER** LIGHTING EFFECT

The STORM from Cameo® Light combines a Derby effect, laser and strobe in one projector. It can be controlled via 10 DMX channels, automatically or by music and used as master or slave. Razor-sharp laser beams in red and green, up to 30 ultra bright strobe lights per second and the RGBWA Derby effect combine to ensure an animated lighting design aimed to impress. The STORM features an easy to read display with function buttons and LEDs to show operating modes, a key switch to prevent unauthorised operation, remote shutdown and IEC power input and output. The comfortable adjustable bracket and a locking ring allow for reliable assembly of the projector.

- ▶ 3-in-1 LED Projector
- ▶ 5 x 3 W RGBAW Derby Effect
- ▶ 150 mW Grating Laser (red 100 mW, green 50 mW)
- ▶ 8 x 1 W Strobe LED's
- ▶ 10 DMX Channels, sound and automatic control
- ▶ Master and slave operation
- ▶ Low power consumption
- ▶ Sturdy metal housing
- ▶ Universal mounting bracket included



WATCH THE DEMO-VIDEO:



Model Name:	CLSTORM	DMX Input:	XLR 3-pin male, Optional Remote Switch
Product Type:	LED / Laser Effect	DMX Output:	XLR 3-pin female
Type:	3-in-1 LED Projector	DMX Mode:	10-channel
Colour Spectrum Derby Effect:	RGBWA	DMX Functions:	Derby, Auto Programs, Sound Programs, Laser, Strobe
Number of LEDs Derby Effect:	5	Standalone Modes:	Sound Programs, Auto Programs
LED Type Derby Effect:	3W	Controls:	Up, Down, Mode Enter
Dispersion Derby Effect:	68°	Display:	4-digit LED Display
Colour Spectrum Laser Effect:	green LED (532 nm), red LED (650 nm)	Power Connector:	IEC Power Input and Output
Number of Diodes Laser Effect:	1 x red, 1x green	Operating Voltage:	100 V AC - 240 V AC, 50 - 60 Hz
Type of Diodes Laser Effect:	red 100 mW, green 50 mW (DPSS Laser)	Power Consumption:	50W
Beam Angle Laser Effect:	74 °	Fuse:	T1.6AL / 250V
Laser Class Laser Effect:	3R	Housing Material:	Metal
Laser Shutdown (Safety Function):	Remote Connection, Connection for External Emergency Stop Switch	Cabinet Colour:	Black
Colour Spectrum Strobe:	White	Housing Cooling:	Fan
Number of LEDs Strobe:	8	Dimensions (without mounting bracket):	250 x 250 x 170 mm
LED Type Strobe:	1 W	Other Features:	Security Lock Slot, Optional Remote Switch, Adjustable Mounting Bracket Included
Beam Angle Strobe:	8 °		



MOONFLOWER HP

32W 4 IN 1 RGBW **HIGH POWER LED** EFFECT

The Cameo® MOONFLOWER HP produces over 150 sharp, closely focused light beams for a stunning and space-filling lighting effect. A particularly powerful and durable 32 Watt Quad LED provides natural RGBW colours with high intensity. The convection- cooled device works almost noiselessly, and the usage time is virtually unlimited thanks to extremely low heat generation. The MOONFLOWER HP can be operated in 2 or 5-channel DMX mode with features such as dimmer, strobe and rotation effects or as master, slave and standalone. To this end, automated programs and a microphone for sound control are integrated; the operation is simple and convenient via four buttons and a bright LED display. The sturdy black metal housing with an adjustable universal mounting bracket is equipped with 3-pin XLR connectors for input and looping of the DMX signal; IEC input and output sockets allow for parallel power supply of daisy chained devices. The Cameo® MOONFLOWER HP is characterised not least by a low power consumption and works with all mains voltages from 100 to 240 volts.

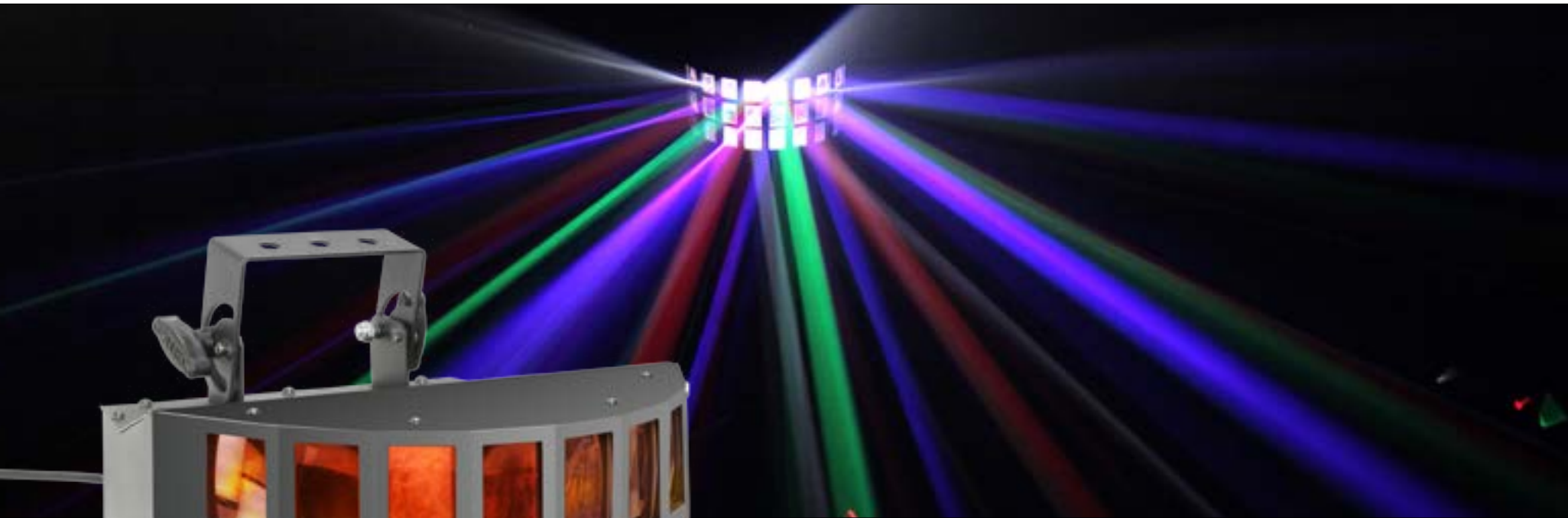
- ▶ 1 x 32 Watt RGBW 4 in 1 High Power LED
- ▶ Low power consumption
- ▶ Power in/out for daisy chaining
- ▶ Operated via DMX, in master/slave mode or standalone mode
- ▶ Integrated microphone for sound control
- ▶ Simple to operate using the four buttons and LED display
- ▶ Rugged metal housing
- ▶ Universal mounting bracket included



WATCH THE DEMO-VIDEO:



Model Name:	CLFLOWERHP
Product Type:	LED Effect Light
Type:	Moonflower
Colour Range:	RGBW
Number of LEDs:	1
LED Type:	32 W 4 in 1
DMX Input:	XLR 3-pin male
DMX Output:	XLR 3-pin female
DMX Mode:	2-channel, 5-channel
DMX Functions:	Strobing Slow & Fast, Colour Selection, No Rotation, Clockwise Fast & Slow, Counter Clockwise Fast & Slow, Dimmer
Standalone Modes:	Auto Run, Sound Control
Controls:	Mode, Enter, Value Up, Value Down
Indicators:	LED Display
Operating Voltage:	100 V AC - 240 V AC, 50 - 60 Hz
Power Consumption:	40 W
Power Connector:	IEC Power Connector Male, IEC Power Connector Female
Housing Material:	Metal
Housing Colour:	Black
Cooling:	Convection
Dimensions (without mounting bracket):	250 x 240 x 177 mm



SUPERFLY HP

5X10W RGBWA HIGH POWER LED EFFECT

The Cameo® SUPERFLY HP features 5 durable, 10 Watt LEDs in the colours red, green, blue, white and amber and 24 precision lenses for an impressive Derby effect. About 40 razor-sharp edged, wide beams cut through the room with intense colours and high luminosity. Thanks to efficient convection cooling, the device operates almost noiselessly, and the minimal heat generation allows for unrestricted operating times. The SUPERFLY HP can be controlled via DMX in 2- or 5-channel mode, and features functions such as rotation, strobe and dimmer to support a vibrant, dynamic lighting design. The unit is also equipped with automated programs, and a microphone for music control and is suitable for use as master, slave or standalone. Four buttons and a bright LED display are used for comfortable operation. The sturdy black metal housing of the SUPERFLY HP has an adjustable universal mounting bracket and a locking ring. 3-pin XLR connectors as DMX input and output as well as IEC-power input and output jacks allow for easy daisy chaining of devices.

- ▶ 5x10W RGBWA High Power LEDs
- ▶ Low power consumption
- ▶ Power in/out for daisy chaining
- ▶ Operated via DMX, in master/slave mode or standalone mode
- ▶ Integrated microphone for sound control
- ▶ Simple to operate using the four buttons and LED display
- ▶ Rugged metal housing
- ▶ Universal mounting bracket included



WATCH THE DEMO-VIDEO:



Model Name:	CLSUPERFLYHP
Product Type:	LED Effect Light
Type:	Derby
Colour Range:	RGBWA
Number of LEDs:	5
LED Type:	10 W RGBWA
DMX Input:	XLR 3-pin male
DMX Output:	XLR 3-pin female
DMX Mode:	2-channel, 5-channel
DMX Functions:	Strobing Fast & Slow, Colour Selection, No Rotation, Clockwise Fast & Slow, Counter Clockwise Fast & Slow, Dimmer
Standalone Modes:	Auto Run, Sound Control
Controls:	Mode, Enter, Value Up, Value Down
Indicators:	LED Display
Operating Voltage:	100 V AC - 240 V AC, 50 - 60 Hz
Power Consumption:	50 W
Power Connector:	IEC Power Connector Male, IEC Power Connector Female
Housing Material:	Metal
Housing Colour:	Black
Cooling:	Convection
Dimensions (without mounting bracket):	360 x 225 x 300 mm



SUNBEAM

1 X 8W RGBA AND 1 X 8W RGBW LED EFFECT

The Cameo® SUNBEAM is an impressive Derby light effect with two 8 Watt Quad LEDs for bright RGBW and RGBA mixtures. 48 precision lenses project multicoloured light beams with extremely sharp edges and a room-filling effect. Thus strobe and rotation functions produce spectacular lively light patterns with different speeds. The SUNBEAM can be controlled via 2- or 5-channel DMX modes, and operated with the integrated programs or sound controlled by the built-in microphone in master, slave or standalone modes. The device is easy to use with four function buttons and a bright LED display. Through effective convection cooling, the robust metal housing does not generate any noticeable heat, and the Cameo® SUNBEAM can be fully operated almost noiselessly. 3-pin XLR connectors as DMX input and looping as well as IEC-power supply and output jacks allow for easy daisy chaining of devices. The adjustable mounting bracket and a locking ring complete the equipment.

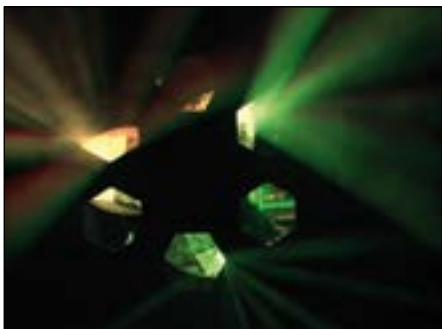
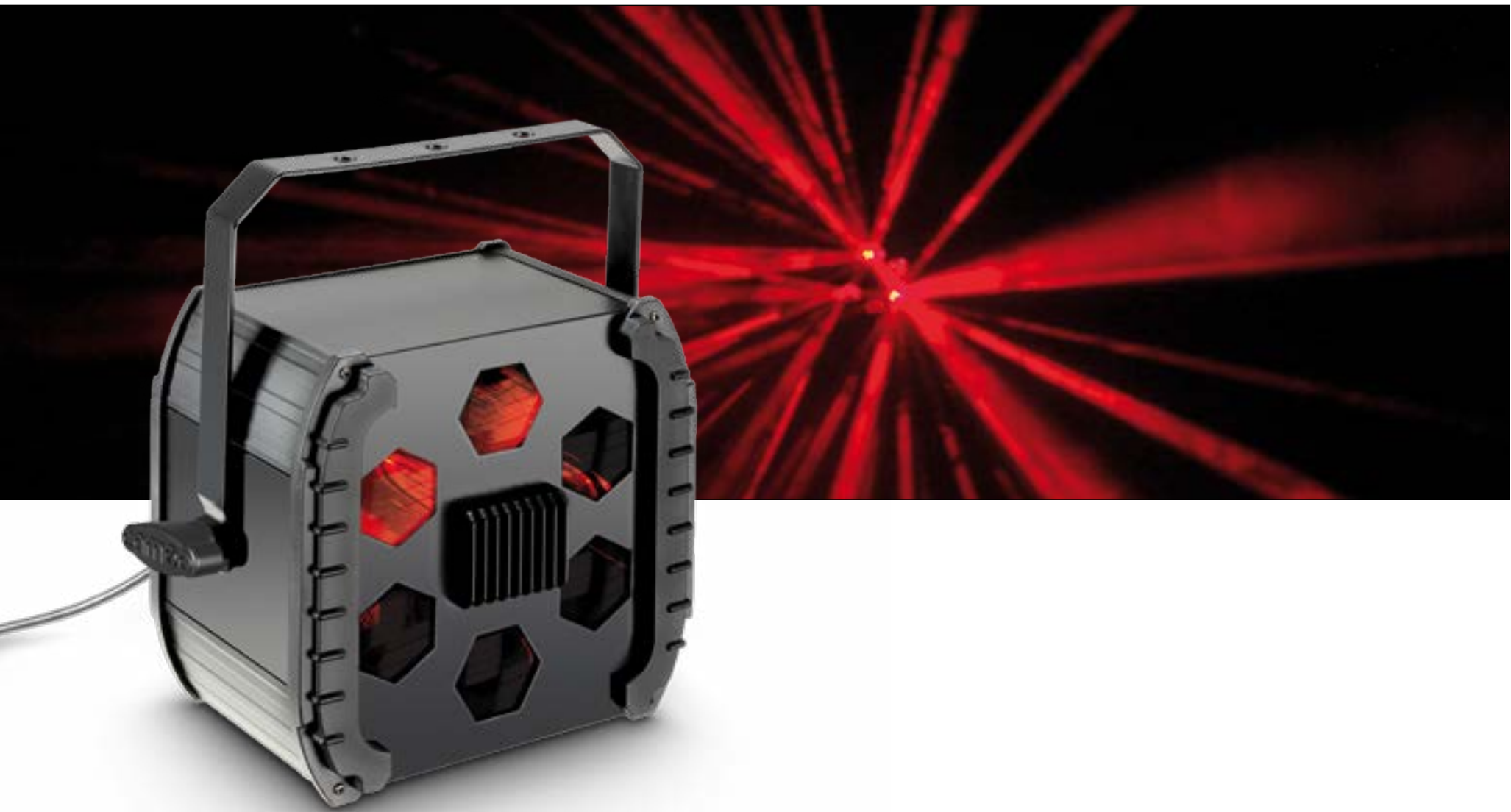
Model Name:	CLSUNBEAM
Product Type:	LED Effect Light
Type:	Derby
Colour Range:	RGBWA
Number of LEDs:	2
LED Type:	8 W RGBW, 8W RGBA
DMX Input:	XLR 3-pin male
DMX Output:	XLR 3-pin female
DMX Mode:	2-channel, 5-channel
DMX Functions:	Strobing Fast & Slow, Colour Selection, No Rotation, Clockwise Fast & Slow, Counter Clockwise Fast & Slow, Dimmer
Standalone Modes:	Auto Run, Sound Control
Controls:	Mode, Enter, Value Up, Value Down
Indicators:	LED Display
Operating Voltage:	100 V AC - 240 V AC, 50 - 60 Hz
Power Consumption	40 W
Power Connector:	IEC Power Connector Male, IEC Power Connector Female
Housing Material:	Metal
Housing Colour:	Black
Cooling:	Convection
Dimensions (without mounting bracket):	357 x 204 x 340 mm

- ▶ 1 x 8W RGBW and 1 x 8W RGBA High Power LEDs
- ▶ Low power consumption
- ▶ Power in/out for daisy chaining
- ▶ Operated via DMX, in master/slave mode or standalone mode
- ▶ Integrated microphone for sound control
- ▶ Simple to operate using the four buttons and LED display
- ▶ Rugged metal housing
- ▶ Universal mounting bracket included



WATCH THE DEMO-VIDEO:





MOONFLOWER

9W **TRI COLOUR LED** EFFECT LIGHT

An LED effect that makes a huge impression! Featuring a 9-Watt TRI colour LED as the light source and six lenses, the CLMOVER1 creates razor-sharp light beams that tear through the room. Colourful, fast and bright and always playing to the right beat thanks to the integral microphone and sound control function. They are actuated either via DMX protocol (3-pole XLR) with four control channels, in master/slave mode or in standalone mode via the sound control. The CLMOVER1 is quick and easy to operate using the four push buttons and an LED display. Its power consumption is a mere 30 Watts.

- ▶ 9W Ultra High Power TRI RGB LED
- ▶ Low power consumption
- ▶ Power in/out for daisy chaining
- ▶ Operated via DMX, in master/slave mode or standalone mode
- ▶ Integrated microphone for sound control
- ▶ Simple to operate using the four buttons and LED display
- ▶ Universal mounting bracket included
- ▶ Sturdy metal housing



WATCH THE DEMO-VIDEO:



Model Name:	CLMOVER1
Product Type:	LED Effect Light
Type:	Moonflower
Colour Range:	RGB
Number of LEDs:	1
LED Type:	9 W TRI Colour
DMX Input:	XLR 3-pole male
DMX Output:	XLR 3-pole female
DMX Mode:	4-channel
DMX Functions:	Colour Selection, No Rotation, Clockwise Fast & Slow, Counter Clockwise Fast & Slow, Strobing Slow & Fast, Dimmer
Standalone Modes:	Auto Run, Sound Control
Controls:	Mode, Enter, Value Up, Value Down
Indicators:	LED Display
Power Supply	100 V AC - 240 V AC, 50 - 60 Hz
Power Consumption	30 W
Power Connector:	IECC Euro Power Socket female
Housing Material:	Metal
Housing Colour:	Black
Dimensions (without mounting bracket):	250 x 177 x 240 mm
Features:	6 lenses for razor sharp beams



FLUIDS

There are different versions of Cameo® Fluids for professional fog machines, haze machines, snow machines and as bubble fluid for bubble machines. The Fine Fluid creates haze effects with conventional fog machines, which can be easily cleaned with our Cleaning Fluid. Cameo® fog fluids are characterised by an excellent reflective behaviour, are not harmful to health and are biodegradable.

**MADE IN GERMANY!**

**BIODEGRADABLE**
READY FOR USE



HAZE FLUID 10L/5L
FOR FINE FOG DENSITY AND
LONG STANDING TIME



HEAVY FLUID 10L/5L
FOG FLUID WITH VERY HIGH DENSITY
AND VERY LONG STANDING TIME



FAST FLUID 5L
FOG FLUID WITH VERY HIGH DENSITY
AND VERY SHORT STANDING TIME



FINE FLUID 5L
HAZE EFFECT FOG FLUID WITH VERY HIGH
DENSITY AND VERY LONG STANDING TIME



**XTRA HEAVY FLUID
10L/5L**
FOG FLUID VERY HIGH DENSITY AND
EXTREME LONG STANDING TIME



DJ FLUID 10L/5L
FOG FLUID WITH MEDIUM DENSITY
AND MEDIUM STANDING TIME



SNOW FLUID 5L
SPECIAL FLUID FOR SNOW MACHINES
FOR THE PRODUCTION OF FOAM



BUBBLE FLUID 5L
SPECIAL FLUID FOR GENERATING
SOAP BUBBLES



CLEANING FLUID 250 ML
SPECIAL FLUID FOR CLEANING FOG MACHINES



- ▶ Professional 8-way DMX splitter / booster
- ▶ Chassis 1U 19“ rack-mount enclosure
- ▶ DMX INPUT: 1 x XLR (5-pin) front panel, 1 x XLR (5-pin) back panel
- ▶ DMX THRU: 1 x XLR (5-pin) front panel, 1 x XLR (5-pin) back panel
- ▶ 8 electrically isolated XLR (5-pin) outputs on the back
- ▶ DMX status indicator per channel
- ▶ Power status indicator
- ▶ Switchable 120 Ohm terminating resistor for the DMX THRU output jack



DMX SPLITTER

8-CHANNEL **DMX SPLITTER / BOOSTER** 5-PIN

The Cameo® CLSB85 is a professional splitter and booster for configuring DMX networks, than can be connected either directly to a DMX console or to DMX devices. The 19” unit (1U) amplifies the DMX input signal and distributes it to 8 electrically isolated outputs on the back; bright LEDs show the DMX and power status of the channels on the front panel. The input and the THRU socket for looping of the signal are duplicated on the front and back of the CLSB85 and connected in parallel. A switchable 120 Ohm terminating resistor on the DMX THRU output and the power switch complete the equipment; the IEC cable is supplied.

Model Name:	CLSB85
Product Type:	DMX 512 protocol
DMX Inputs:	2 (parallel)
DMX Input Connectors:	5-pin XLR male
DMX Thru Outputs:	2 (parallel)
DMX Thru Output Connectors:	5-pin XLR female
DMX Outputs:	8 (electrically isolated)
DMX Output Connectors:	5-pin XLR female
Controls:	Power On/Off, DMX Thru Terminator
Indicators:	8 x Power LED, 8 x Signal LED
Power Socket:	IEC Power Socket
Power Supply:	Transformer
Operating Voltage:	230V AC, 50 Hz
Power Consumption (max.):	15 W
Housing Material:	Metal
Housing Colour:	Black
Dimensions (without mounting bracket):	483 x 44 x 160 mm
Accessories included in Package:	power cord



- ▶ Professional 8-way DMX splitter / booster
- ▶ Chassis 1U 19“ rack-mount enclosure
- ▶ DMX INPUT: 1 x XLR (3-pin) front panel, 1 x XLR (3-pin) back panel
- ▶ DMX THRU: 1 x XLR (3-pin) front panel, 1 x XLR (3-pin) back panel
- ▶ 8 electrically isolated XLR (3-pin) outputs on the back
- ▶ DMX status indicator per channel
- ▶ Power status indicator
- ▶ Switchable 120 Ohm terminating resistor for the DMX THRU output jack



DMX SPLITTER

8-CHANNEL **DMX SPLITTER / BOOSTER** 3-PIN

The Cameo® CLSB83 is the professional solution for configuring DMX networks. The splitter and booster in 19” format amplifies the DMX input signal and distributes it to 8 electrically isolated outputs. It is connected directly to the DMX controller or to DMX devices. The input and the THRU socket for looping of the signal are duplicated on the front and back of the CLSB83 and connected in parallel. Bright LEDs show the DMX and power status of the channels on the front panel, the outputs are located on the back. A switchable 120 Ohm terminating resistor on the DMX THRU output and the power switch complete the equipment; the IEC-cable is supplied.

Model Name:	CLSB83
Product Type:	DMX 512 protocol
DMX Inputs:	2 (parallel)
DMX Input Connectors:	3-pin XLR male
DMX Thru Outputs:	2 (parallel)
DMX Thru Output Connectors:	3-pin XLR female
DMX Outputs:	8 (electrically isolated)
DMX Output Connectors:	3-pin XLR female
Controls:	Power On/Off, DMX Thru Terminator
Indicators:	8 x Power LED, 8 x Signal LED
Power Socket:	IEC Power Socket
Power Supply:	Transformer
Operating Voltage:	230V AC, 50 Hz
Power Consumption (max.):	15 W
Housing Material:	Metal
Housing Colour:	Black
Dimensions (without mounting bracket):	483 x 44 x 160 mm
Accessories included in Package:	power cord



- ▶ Universal 6-channel DMX controller
- ▶ Battery operation possible
- ▶ External power supply included
- ▶ Rugged metal housing



CONTROL 6

6 CHANNEL DMX CONTROLLER

The Cameo® CLCONTROL6 is an especially compact DMX controller with 6 channels that is perfect for controlling small lighting systems. It can be mounted in many ways and of course can also be used as a freestanding unit; it is extremely easy to operate. The CLCONTROL6 has 6 smoothly shifting faders for the individual DMX channels and a master fader. It can be powered using the included external power adapter or battery and thus is universally useable for manual control of DMX systems. A 3-pole XLR socket is used as the DMX output; a red LED serves as a power indicator. This straightforward lightweight impresses with clear functionality and high user friendliness.

Model Name:	CLCONTROL6
Product:	DMX mixer
Type:	DMX 512 protocol
Number of DMX channels:	6
DMX output	3-pole XLR female
Controls:	6 x channel faders, master fader
Indicators:	Power LED
Power supply:	External power adapter, 9 V block battery
Operating volatge:	9 - 12 V DC
Dimensions:	165 x 56 x 131 mm
Accessories (included):	AC Adapter, 9 V block battery



- Easy on stage control for CLMPAR1, CLMPAR2, CLMPAR3 & CLMPARCOB1
- Functions: black out, full on, sound control, static colours, light 1/2, auto run
- Rugged metal housing
- 10 m 5-pin XLR connection cable included



MULTI PAR FOOT + 4-SWITCH FOOT PEDAL FOR ALL CLMPAR LIGHT SETS

The Cameo® CLMPARFOOTPLUS universal Multi PAR 4-switch foot pedal gives you optimum control of all Cameo® LED lighting system CLMPAR3 functions - even without connection to a DMX controller. All the functions can be activated via four solid, non-slip foot switches. Three LEDs are integrated in the compact, solid housing of the Cameo® Multi PAR 4-switch foot pedal for visual control of all the functions (mode up, mode down, blackout, sound active, program, colours, full on).

The device is connected via a ten-metre, five-pin XLR cable, supplied with the device and is compatible to the following devices: CLMPAR1, CLMPAR2, CLMPAR3 and CLMPACOB1.

Model Name:	CLMPARFOOTPLUS
Product:	Foot Switch
Controls:	Mode, Up, Down, Blackout, Microphone Sensitivity, CD/USB/SD
Indicators:	Program Selection, Static Colour, Sound Control
Connectors:	5-pole XLR male
Dimensions:	291 x 65 x 103 mm
Features:	10 m 5-pole XLR cable included



LED Technology

LEDs are extremely advantageous for the use in lighting systems: they are bright, emit very little heat, have a very long lifetime and low energy consumption. Also, LED fixtures often weigh less than conventional devices.



Eco-Friendly

With highly efficient energy use, a very long LED lifetime and low heat emission this device is environmentally friendly.



DMX512

Created in 1986, DMX512 is a communications standard for lighting equipment. Up to 32 DMX devices can be daisy-chained and controlled by a dedicated source, e.g. a lighting console. In a DMX512 daisy chain "network", the controller is called "master" while the daisy-chained devices are the "slaves."



“Master” and “Slave”

Simply put, this device is able to control or be controlled by other devices. In “master” mode and first in a chain, the device acts as a controller for devices (“slaves”) that are connected to its output. In “slave” mode, the input of the device is connected to the output of a lighting console or “master.” Devices that are daisy-chained to a slave’s output also act as slaves.



Sound Control

In “sound to light” mode, the device is controlled by a built-in microphone capturing sounds to activate colour changes, e.g. the beat of the music.



Standalone Mode

In “standalone” mode, this device uses built-in programs to control its functions. There is no need for a lighting console or “master” controller.



RGB additive Colour System

Additive colour mixes varying amounts of red, green and blue to produce other colours and white. The RGB system is used in television, computer monitors and digital cameras to name a few.



RGB additive Colour System plus amber LEDs

Amber is a pure colour outside the RGB spectrum. Adding amber LEDs to the RGB system produces deeper, warmer, more saturated colours.



RGB additive Colour System plus white LEDs

Adding white LEDs to the RGB system produces more contrast and definition and enhances the RGB generated white and pastel colours.



RGBWA

Adding white and amber LEDs to the RGB system produces more contrast and definition and enhances the RGB generated from white and pastel colours while amber is adding deeper, warmer, more saturated colours.



Strobe Lighting

Strobe lights emit a large number of periodic flashes per second seemingly freezing the movement of objects thus creating the illusion of slow motion.

ICON **LEGEND**



COB LED Technology

The “chip-on-board” multi-LED array is a recent technology that produces a high-density large-area light source with high brightness and uniform diffusion for a rich wash of colours.



Tri-Colour RGB LEDs

Also called 3-in-1, RGB LEDs have red, green and blue emitters in a single LED. They are capable of producing the RGB additive colour spectrum and white.



Quad-Colour RGBA/RGBW LEDs

Also called 4-in-1, quad-colour LEDs add amber to the RGB spectrum for increased saturation, or white for improved contrast and definition.



5in1 LED

Add amber and white to the RGB spectrum for increased saturation,and white for improved contrast and definition.



6in1 LED

Add amber, white and UV to the RGB spectrum for increased saturation,and white for improved contrast and definition. UV is a nice feature as an alternative to classic black lights.



Ingress Protection Rating of 65

The IP code rates the degree of protection against the intrusion of solid objects, water and access to hazardous parts. This device is completely protected against hazardous contact, water jets and ingress of dust.



Laser Light

Due to its remarkable directional quality laser light maintains brightness and visibility over long distances. Producing tightly focused, narrow beams that are perfect for impressive lighting effects laser sources are extremely energy-efficient.



UV

UV or Black lights are employed for decorative and artistic lighting effects



Infrared Remote Control

Featuring an IR sensor the device can be controlled via the included handheld wireless IR remote control.



Cold White

Referring to color temperature measured in Kelvin (K) “cold white” provides a very bright, clean light in the 5000 - 10000 K range with a somewhat artificial touch that goes well with deeply saturated primary colors.



Warm White

Referring to color temperature measured in Kelvin (K) “warm white” is in the 2000 - 4000 K range providing a soft light with a slight touch of yellow that is natural and pleasing to the eye.



PRODUCT CATALOGUE 2015

The information contained in this publication, including numerical data, has been prepared as a general guide to the products, but intending buyers and users must satisfy themselves as to the suitability and the safety of the products for their particular purposes and duties. No responsibility is assumed for any errors herein. The company reserves the right to alter the designs and material specifications of products shown in this publication without notice.

*Recommended Retail Price in Euros inclusive 19 % German VAT.

WWW.cameolight.com

Cameo® is a brand of the Adam Hall Group.



www.facebook.com/cameolightandsound
www.youtube.com/cameolightandsound
blog.adamhall.com

your **cameo® light** dealer: